



Sealing for a Safer and Greener Tomorrow

FLUID SEALING PRODUCTS



Packing - Compressed Fiber Sheet - PTFE Products - Graflex - Metallic Gaskets

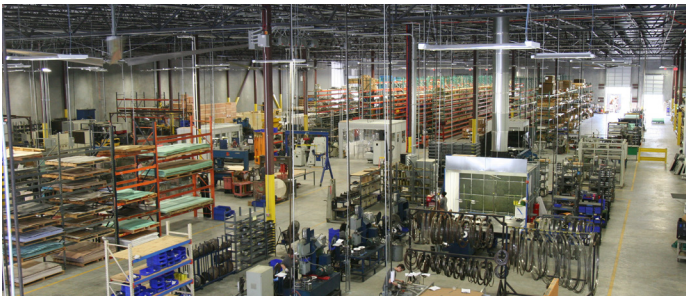
About the Teadit® Group

With plants and operations worldwide, the Teadit® Group serves industrial fluid sealing requirements with a complete range of products and technical services. In business for more than 50 years, the company is vertically integrated from the basic development of yarns and filaments used in the manufacture of its products, to the installation of its products in the field. Teadit® is a world leader in the development and manufacture of compression packings, gasket sheet materials, metal gaskets, textiles, metal bellows, expansion joints and expanded PTFE joint sealant materials in the form of tapes and sheets.

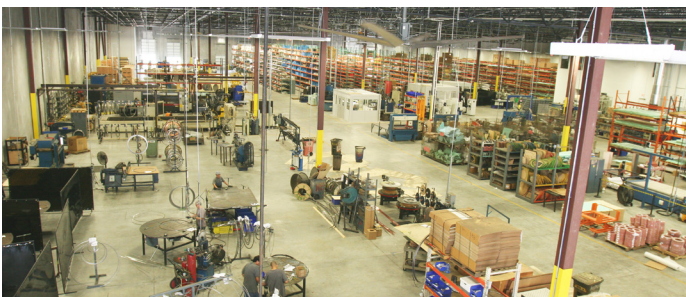
Teadit® Research and Development Department has world-class technical support, product development, and testing.



Teadit® has state-of-the-art manufacturing facilities worldwide with plants operating under ISO 9001 certification. Careful consideration and implementation is given to environmental concerns.



Teadit® North America occupies a 110,000 square foot building in Pasadena, Texas. The building is located near the intersection of Red Bluff and Bay Area Blvd. The state-of-the-art manufacturing facility specializes in the production of Die and Precision Cut Gaskets, Spiral Wound Gaskets, Corrugated Gaskets, Camprofile, Double Jacketed and Special Alloy Metal Gaskets. Teadit also stocks a variety of Fluid Sealing materials such as: Compression Packings, Compressed Non-Asbestos Gasket Sheet Materials, Tealon® (Restructured PTFE), Expanded Teflon (sheet and rolls), and Graphite Sheet.



INDEX



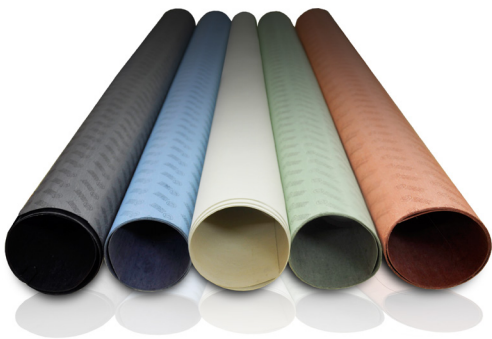
COMPRESSION PACKING

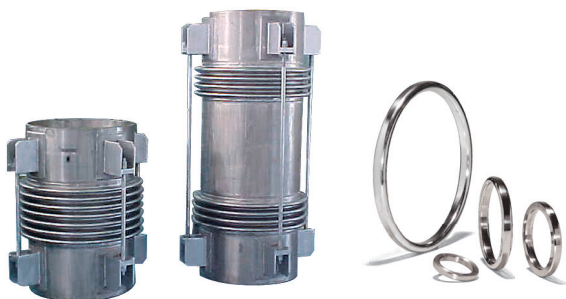
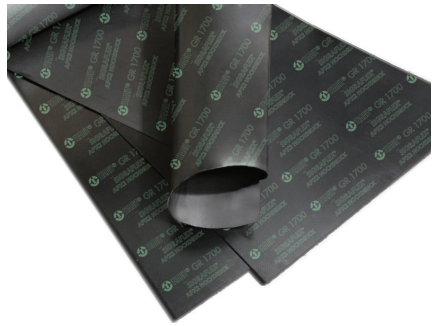
2235	Flexible Graphite with Inconel Wire Jacket (Steam Service)	P.1
2236	Flexible Graphite with Inconel Wire Jacket (Low Emission)	P.1
2645 SBSS	Spacer Bushing Spool Stock	P.1
2002	Carbon Yarn, Graphite Filled	P.1
2202	Flexible Graphite with Carbon Corners	P.1
2000	Flexible Graphite	P.1
2001	Graphite Yarn, Graphite Filled	P.1
2103T	Carbon Yarn, PTFE Impregnated	P.1
2214	High Temp, Non-Asbestos, Valve Stem Packing	P.1
2255	Synthetic Yarn with Graphite, Lubricated	P.1
2020	PTFE FDA Premium Pump Packing	P.1
2005	Expanded PTFE Yarn, Dry	P.1
2006	Expanded PTFE Yarn, FDA Approved (Lubricated)	P.1
2007	Expanded PTFE with Graphite	P.1
2070	Expanded PTFE Graphite Yarn with Aramid Core	P.1
2003	PTFE with Aramid Corners	P.1
2004	Aramid Yarn with PTFE	P.1
2017	Expanded PTFE with Graphite and Aramid Corners	P.2
2044	Spun Aramid Yarn with PTFE	P.2
2773	Novoloid Fiber Impregnated with PTFE, Graphite and Silicone Oil	P.2
2774	Phenolic Fiber Impregnated with PTFE and Mineral Lubricant	P.2
2777	Novoloid Fiber, PTFE Impregnated	P.2
2030	Meta-Aramid with PTFE and Mineral Oil	P.2
2019	Synthetic Yarn with PTFE, Lubricated	P.2
2138	Ramie Yarn, Paraffin Impregnated	P.2
2421	Ramie Yarn, PTFE Impregnated	P.2
JAMPAK® 26	Injectable Packing	P.2
JAMPAK® 27	Injectable Packing	P.2

NA GASKET MATERIAL

NA1001	Aramid Fiber, NBR	P.3
NA1035	Aramid Fiber, SBR	P.3
NA1076	Aramid Fiber, Neoprene Binder	P.3
NA1080	Premium Grade Aramid Fiber, SBR	P.3
NA1081	Premium Grade Aramid Fiber, NBR	P.3
NA1082SAN	Sanitary Service Gasket Material - NSF-61 Certified	P.3
NA1085	Aramid Fiber, CSM Binder for acids	P.3
NA1088	Controlled Swell Sheet	P.3
NA1100	Carbon Fiber, NBR*	P.3
NA1122	High Performance Sheet, NBR*	P.3
NA1000M	Aramid Fiber with Wire Mesh, NBR	P.3

*Metal insert available upon request for NA1100 and NA1122





HIGH TEMPERATURE GASKETING MATERIAL

TM1860	TerMica	P.4
TM1863	TerMica Metal Reinforced	P.4
913 XHR	Spiral Wound Gasket with TM1860 and APX2 Filler	P.4
942 XHR/ 946 XHR	Camprofiles with TM1860 and APX2 Facing	P.4

GRAPHITE PRODUCTS

GR1700	High Temp Flexible Graphite Sheet with Multiple Foil Inserts	P.4
1660	Flexible Graphite Sheet (Homogeneous)	P.4
1661	Flexible Graphite Sheet (316SS foil insert)	P.4
1663	Flexible Graphite Sheet (316SS tanged insert)	P.4
2550/2551	Flexible Graphite Tape	P.4

LOW EMISSION

2236	Premium Low Emission Valve Packing, Wire Reinforced	P.5
EcoTape-LE	Thread Seal Tape made from Expanded PTFE combined with Graphite	P.5
913M-LE	Low Emission Spiral Wound	P.5

TEALON®

TF1560	Restructured PTFE for Monomer Service	P.6
TF1570	Restructured PTFE with Glass Spheres	P.6
TF1572SAN	Sanitary Service Gasket Material - NSF-61 Certified	P.6
TF1580	Restructured PTFE with Barium Sulfate	P.6
TF1590	Restructured PTFE with Silica	P.6

EXPANDED PTFE

24SH	Expanded PTFE Gasket Sheet	P.7
24B	Expanded PTFE Joint Sealant	P.7
24BB	Expanded PTFE Tape	P.7
24A	Expanded Valve Stem Packing	P.7
25BI	Multidirectional Expanded PTFE Gasket Tape	P.7

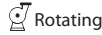
METALLIC GASKETS

911	Winding	P.8
911M	Winding with Inner Ring	P.8
911T	Winding with Ribs	P.8
913	Spiral Wound Gasket with Outer Ring	P.8
913M	Spiral Wound Gasket with Outer Ring and Inner Ring	P.8
914	Winding for Hand Holes/Manways, etc.	P.8
920/923/ 926/ 927/929	Double Jacketed Gaskets	P.8
942/946	Camprofile Gaskets	P.9
905	Metalbest	P.9
940	Solid Metal Ring	P.9

OTHER PRODUCTS

Ring Joints	P.10
Flange Protector	P.10
Fire Protector	P.10
Expansion Joints	P.11

COMPRESSION PACKING



2235 - Flexible Graphite with Inconel Wire Jacket (Steam Service)



Temperature °F (°C):
Max. **842** (450) Min. **-400** (-240)
Steam **6500** (450) pH: **0 - 14**
Pressure psi (bar): **↕ 6500** (450)

2236 - Flexible Graphite with Inconel wire Jacket (Low Emission)



Temperature °F (°C):
Max. **851** (455) Min. **-400** (-240) Certified
Steam **1202** (650) Fire Test
pH: **0 - 14** API622 • ISO 15848-1
Pressure psi (bar): **↕ 6526** (450)

2645 SBSS - Spacer Bushing Spool Stock



Style 2645 replaces the need for carbon bushings and provides an efficient spacer from a single braided spool. It is recommended that Style 2645 be used in conjunction with one of Teadit's premium packing materials such as our certified low leaking technology Style 2236 to achieve excellent sealability.

2002 - Carbon Yarn, Graphite Filled



Temperature °F (°C):
Max. **842** (450) Min. **-400** (-240) Steam **1202** (650)
Shaft Speed f/m (m/s): **3937** (20) pH: **0 - 14**
Pressure psi (bar):
↕ 4351 (300) **↔ 1450** (100) **↻ 362** (25)

2202 - Flexible Graphite with Carbon Corners



Temperature °F (°C):
Max. **842** (450) Min. **-400** (-240) Steam **1202** (650)
Shaft Speed f/m (m/s): **3937** (20) pH: **0 - 14**
Pressure psi (bar):
↕ 4351 (300) **↔ 2900** (200) **↻ 435**(30)

2000 - Flexible Graphite



Temperature °F (°C):
Max. **842** (450) Min. **-400** (-240)
Steam **1202** (650)
Shaft Speed f/m (m/s): **3937** (20)
pH: **0 - 14**
Pressure psi (bar):
↕ 4351 (300) **↔ 1450** (100) **↻ 435** (30)

2001 - Graphite Yarn, Graphite Filled



Temperature °F (°C):
Max. **842** (450) Min. **-400** (-240) Steam **1202** (650)
Shaft Speed f/m (m/s): **3937** (20)
pH: **0 - 14**
Pressure psi (bar):
↕ 4351 (300) **↔ 1450** (100) **↻ 435** (30)

2103T - Carbon Yarn, PTFE Impregnated



Temperature Limits (°C):
Max. **536** (280) Min. **-328** (-200)
Shaft Speed f/m (m/s): **2952** (15)
pH: **0 - 14**
Pressure psi (bar):
↕ 4351 (300) **↔ 1450** (100) **↻ 362** (25)



2214 - High Temp, Non-Asbestos, Valve Stem Packing

Temperature Limits (°C):
Max. **1202** (650) Min. -
Shaft Speed f/m (m/s): **2500** (13) pH: **2 - 12**
Pressure psi (bar): **↕ 2500** (170) **↔ -** **↻ -**



2255 - Synthetic Yarn Graphite, Lubricated

Temperature Limits (°C):
Max. **446** (230) Min. **-148** (-100)
Shaft Speed f/m (m/s): **1968** (10) pH: **4 - 10**
Pressure psi (bar):
↕ 725 (50) **↔ 290** (20) **↻ 290** (20)



2020 - PTFE FDA Premium Pump Packing

Temperature °F (°C):
Max. **536** (280) Min. **-450** (-268)
Shaft Speed f/m (m/s): **3937** (20) pH: **0 - 14**
Pressure psi (bar): **↔ 435** (30) **↻ 290** (20)



2005 - Expanded PTFE Yarn, Dry

Temperature °F (°C):
Max. **536** (280) Min. **-450** (-268) Certified
Shaft Speed f/m (m/s): **984** (5) FDA
pH: **0 - 14** BAM Tested
Pressure psi (bar):
↕ 3625 (250) **↔ 2175** (150) **↻ 290** (20)



2006 - Expanded PTFE Yarn, FDA Approved (Lubricated)

Temperature °F (°C):
Max. **536** (280) Min. **-148** (-100)
Shaft Speed f/m (m/s): **2362** (12) pH: **0 - 14**
Pressure psi (bar):
↕ 1450 (100) **↔ 435** (30) **↻ 435** (30) Certified
FDA



2007 - Expanded PTFE with Graphite

Temperature °F (°C):
Max. **540** (280) Min. **-328** (-200)
Shaft Speed f/m (m/s): **4921** (25) pH: **0 - 14**
Pressure psi (bar):
↕ 2900 (200) **↔ 1450** (100) **↻ 507** (35)



2070 - Expanded PTFE Graphite Yarn with Aramid Core

Temperature °F (°C):
Max. **540** (280) Min. **-148** (-100)
Shaft Speed f/m (m/s): **4921** (25) pH: **0 - 14**
Pressure psi (bar): **↕ 3625** (250) **↔ 3625** (250)
↻ 507 (35)



2003 - PTFE with Aramid Corners

Temperature °F (°C):
Max. **536** (280) Min. **-148** (-100)
Shaft Speed f/m (m/s): **2362** (12) pH: **2 - 12**
Pressure psi (bar):
↕ 2610 (180) **↔ 1450** (100) **↻ 435** (30)



2004 - Aramid Yarn with PTFE

Temperature °F (°C):
Max. **540** (280) Min. **-148** (-100)
Shaft Speed f/m (m/s): **2952** (15) pH: **2 - 12**
Pressure psi (bar):
↕ 3625 (250) **↔ 2900** (200) **↻ 507** (35)



2017 - Expanded PTFE with Graphite and Aramid Corners

Temperature °F (°C): Max. **536** (280) Min. **-148** (-100)
Shaft Speed f/m (m/s): **3937** (20) pH: **2 - 12**
Pressure (bar):
↕ **2900** (200) ↖ **2900** (200) ↗ **435** (30)



2030 - Meta-Aramid with PTFE and Mineral Oil

Temperature °F (°C):
Max. **554** (290) Min. **-148** (-100)
Shaft Speed f/m (m/s): **2952** (15) pH: **1 - 13**
Pressure psi (bar):
↕ **2900** (200) ↖ **2175** (150) ↗ **507** (35)



2044 - Spun Aramid Yarn with PTFE

Temperature °F (°C): Max. **536** (280) Min. **-148** (-100)
Shaft Speed f/m (m/s): **2952** (15) pH: **2 - 12**
Pressure psi (bar):
↕ **2200** (150) ↖ **1160** (80) ↗ **300** (20)



2019 - Synthetic Yarn with PTFE, Lubricated

Temperature °F (°C):
Max. **466** (230) Min. **-148** (-100)
Shaft Speed f/m (m/s): **2362** (12) pH: **2 - 12**
Pressure psi (bar):
↕ **1450** (100) ↖ **1160** (80) ↗ **290** (20)



2773 - Novoloid Fiber Impregnated with PTFE, Graphite and Silicon Oil

Temperature °F (°C):
Max. **482** (250) Min. **-148** (-100)
Shaft Speed f/m (m/s): **3937** (20) pH: **1 - 13**
Pressure psi (bar):
↕ **1740** (120) ↖ **870** (60) ↗ **290** (20)



2138 - Ramie Yarn, Paraffin Impregnated

Temperature °F (°C): Max. **212** (100) Min. -
Shaft Speed f/m (m/s): **1181** (6) pH: **6 - 8**
Pressure psi (bar):
↕ **290** (20) ↖ **217** (15) ↗ **217** (15)



2774 - Phenolic Fiber Impregnated with PTFE and Mineral Lubricant

Temperature °F (°C): Max. **482** (250) Min. **-148** (-100)
Shaft Speed f/m (m/s): **2952** (15) pH: **1 - 13**
Pressure psi (bar):
↕ **1740** (120) ↖ **870** (60) ↗ **290** (20)



2421 - Ramie Yarn, PTFE Impregnated

Temperature °F (°C): Max. **266** (130) Min. -
Shaft Speed f/m (m/s): **1968** (10) pH: **5 - 11**
Pressure psi (bar):
↕ **450** (30) ↖ **290** (20) ↗ **290** (20)



2777 - Novoloid Fiber, PTFE Impregnated

Temperature °F (°C): Max. **482** (250) Min. **-148** (-100)
Shaft Speed f/m (m/s): **2952** (15) pH: **1 - 13**
Pressure psi (bar):
↕ **1450** (100) ↖ **725** (50) ↗ **362** (25)

JAMPAK® Injectable Packing

Teadit's JAMPAK® injectable pump and valve sealing system has been and continues to be a leading edge technology for Teadit worldwide. JAMPAK® combines the unique ability to repack pumps and valves on-line with conventional packing technology. The attributes expressed give you, our customer, the ability to continue operating as new JAMPAK® material is installed through our injection process.

In all, JAMPAK® provides reduced operating cost, saving on energy consumption, and reduction of downtime along with a reduced need for equipment repair, rework or overhaul.



JAMPAK® 26

A non-staining, non-toxic PTFE fiber blended with FDA-approved lubricant for clean "A" food grade applications.
Color: White



JAMPAK® 27

A blend of high-performance PTFE fibers and chemically resistant lubricants.
Color: Black

JAMPAK® 26

Applications:

-Centrifugal pumps Rotating equipment;
-Reciprocating equipment Valves.

Product Service:

-Foods
-Potable Water
-Pharmaceuticals
-Acids
-Caustics

Color: White

JAMPAK® 27

Applications:

-Centrifugal pumps Rotating equipment;
-Reciprocating equipment Valves.

Product Service:

-Sea Water
-Brine
-Acids/Caustic
-Alkalis
-Certain Solvents

Color: Black

PORTABLE PACKING CUTTER



Packing Cutter is made out of special and highly resistant plastic; it is light and it can be adjusted for cutting angles of 45° and 90°. It provides rapid and perfect cuts, without leaving burrs.

GASKET MATERIAL



NA1001 - Aramid Fiber, NBR

Temperature	Continuous: up to 464°F (240°C)
	Maximum: up to 716°F (380°C)
Pressure	Continuous: up to 725 psi (50 bar)
	Maximum: up to 1595 psi (110 bar)

Color: **Green, White, or Blue**



NA1035 - Aramid Fiber, SBR

Temperature	Continuous: up to 464°F (240°C)
	Maximum: up to 700°F (371°C)
Pressure	Continuous: up to 725 psi (50 bar)
	Maximum: up to 1015 psi (70 bar)

Col. **Off White - NA1035W or Grey/Black - NA1035B**



NA1076 - Aramid Fiber, Neoprene Binder

Temperature	Continuous: up to 392°F (200°C)
	Maximum: up to 698°F (370°C)
Pressure	Vacuum: to 725 psi (50 bar)

Color: **Black**



NA1080 - Aramid Fiber, SBR

Temperature	Continuous: up to 518°F (270°C)
	Maximum: up to 716°F (380°C)
Pressure	Continuous: up to 725 psi (50 bar)
	Maximum: up to 1015 psi (70 bar)

Color: **Off White**



NA 1081 - Aramid Fiber, NBR

Temperature	Continuous: up to 500°F (260°C)
	Maximum: up to 716°F (380°C)
Pressure	Continuous: up to 725 psi (50 bar)
	Maximum: up to 1595 psi (110 bar)

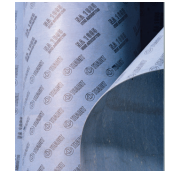
Color: **Blue**



NA1082 SAN - Sanitary Service Gasket Material

Temperature	Continuous: up to 500°F (260°C)
	Maximum: up to 716°F (380°C)
Pressure	Continuous: up to 1160 psi (80 bar)
	Maximum: up to 1595 psi (110 bar)

Color: **Blue**
Note: **NSF-61 Certified**



NA1085 - Aramid Fiber, CSM Binder

Temperature	Continuous: up to 392°F (200°C)
	Maximum: up to 464°F (240°C)
Pressure	Continuous: up to 725 psi (50 bar)
	Maximum: up to 1015 psi (70 bar)

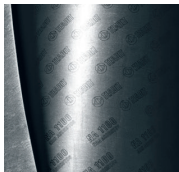
Color: **Cobalt Blue**



NA1088 - Controlled Swell Sheet

Temperature	Continuous: up to 400°F (205°C)
	Maximum: up to 650°F (343°C)*
Pressure	Continuous: up to 500 psi (34.5 bar)
	Maximum: up to 1000 psi (69 bar)

Color: **Beige/Off White**



NA 1100 - Carbon Fiber, NBR

Temperature	Continuous: up to 518°F (270°C)
	Maximum: up to 842°F (450°C)
Pressure	Continuous: up to 1015 psi (70 bar)
	Maximum: up to 1885 psi (130 bar)

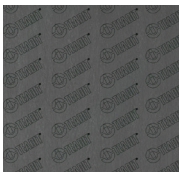
Color: **Black**



NA 1122 - High Performance Sheet, NBR

Temperature	Continuous: up to 806°F (430°C)
	Maximum: up to 1022°F (550°C)
Pressure	Continuous: up to 1480 psi (102 bar)
	Maximum: up to 2176 psi (150 bar)

Color: **Dark Gray**



NA 1000M - Aramid Fiber with Wire Mesh, NBR

Temperature	Continuous: up to 392°F (200°C)
	Maximum: up to 716°F (380°C)
Pressure	Continuous: up to 580 psi (40 bar)
	Maximum: up to 1450 psi (100 bar)

Color: **Dark Gray**

Sheet Size Availability

Sizes: 59"x63"

59"x126"

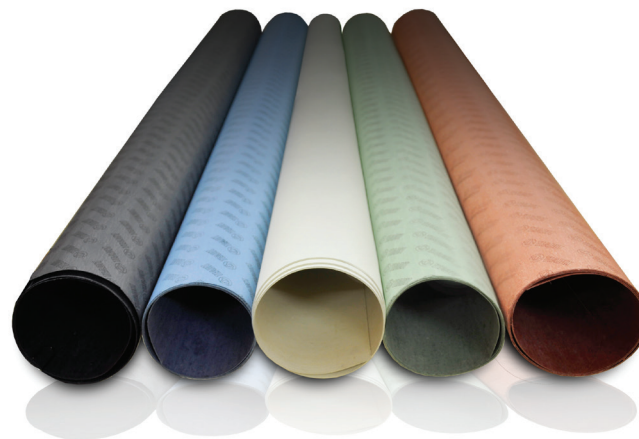
118x126***

Thickness (in): 1/64, 1/32, 1/16, 1/8, 1/4, 3/32, 3/16

*Consult with Teadit Engineering. Values are based on short term and peak conditions

**size available only for NA1001

Other sizes are available upon request.



High Temperature TerMica Gasketing Material



TM1860

Temperature Maximum: up to **1832°F** (1000°C)
 Pressure Maximum: up to **72 psi** (5 bar)
 Color: **Tan with Green Tint**

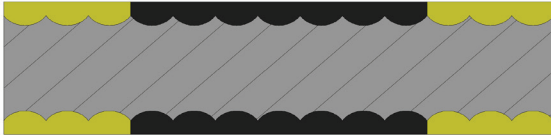


TM1863

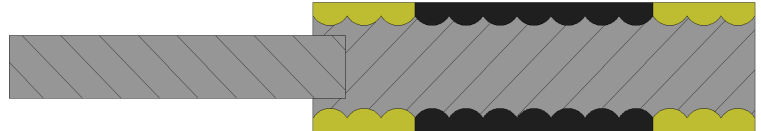
Temperature Maximum: up to **1832°F** (1000°C)
 Pressure Maximum: up to **391 psi** (27 bar)
 Color: **Tan with Green Tint**

Sheet Size Availability

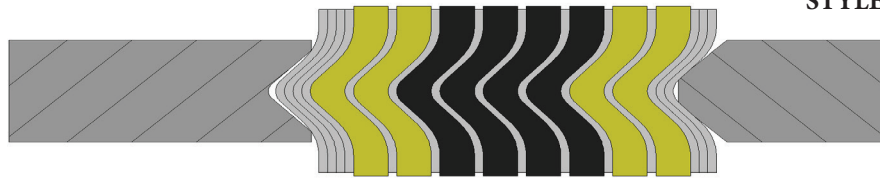
Size **39.4"x47"** Thickness **1/16, 1/8, .040", .020"**



STYLE 942-XHR



STYLE 946-XHR



STYLE 913M-XHR

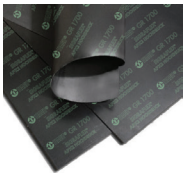
942 XHR/ 946 XHR

Temperature Maximum: up to **1500+°F** (815+°C)

913M XHR

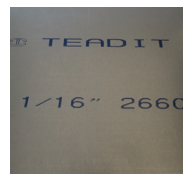
Temperature Maximum: up to **1500+°F** (815+°C)

GRAPHITE PRODUCTS



GR 1700 - High Temp Flexible Graphite Sheet with Multiple Foil Inserts

Temperature °F (°C):
 Minimum **-418** (-250)
 Maximum **1202** (650)
 Pressure psi (bar): **3625** (250)



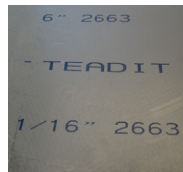
GR 1660 - Homogeneous Flexible Graphite Sheet

Temperature °F (°C): Minimum **-328** (-200)
 Maximum:
 in Air **842** (450)
 in Steam **1202** (650)
 in Reducing or inert media **5432** (3000)
 pH: **0 - 14** Pressure psi (bar): **2030** (140)



GR 1661 - Stainless Steel Flexible Graphite Sheet Foil Insert

Temperature °F (°C): Minimum **-328** (-200)
 Maximum:
 in Air **842** (450)
 in Steam **1202** (650)
 in Reducing or inert media **5432** (3000)
 pH: **0 - 14** Pressure psi (bar): **2030** (140)



GR 1663 Flexible Graphite Sheet 316SS Tang Insert

Temperature °F (°C): Minimum **-328** (-200)
 Maximum:
 in Air **842** (450)
 in Steam **1202** (650)
 in Reducing or inert media **5432** (3000)
 pH: **0 - 14** Pressure psi (bar): **2030** (140)

Sheet Size Availability

Size **39"x39", 60"x60"** Thickness (in): **1/32, 1/16, 1/8, 1/4***

* 1/64, 3/32, 3/16 available on special request.

Flexible Graphite Tape



GR 2550 - Crinkled Flexible Graphite Tape (No Adhesive)

Temperature °F (°C): Minimum **-328** (-200)
 Maximum: In Air **842** (450)
 In Steam **1202** (650)
 In reducing or Inert Media **5432** (3000)
 Pressure psi (bar): **2000** (137)



GR 2551 - Crinkled Flexible Graphite Tape (Adhesive)

Temperature °F (°C): Minimum **-328** (-200)
 Maximum: In Air **842** (450)
 In Steam **1202** (650)
 In reducing or Inert Media **5432** (3000)
 Pressure psi (bar): **2000** (137)

Low Emission Products

STYLE 2236



Valve Stem Packing, Flexible Graphite, Inconel®

Style 2236 is ideal for valves and can be used within a broad range of applications. It is well suited for power plants, refineries, petrochemical industries, chemical processing as well as sealing applications in steam at high pressure and temperatures.

This product is self-lubricating, non-hardening, dimensionally stable and resistant to gases and fluids as well as heat, pressure and chemicals. The Inconel® filament jacket affords mechanical stability and resists extrusion. The advanced construction provides leakage control and has high integrity in steam service.

KEY FEATURES

- Certified Low-Leakage Packing Technology
- TA-Luft approved
- Suitable to VOC and VHAP emissions regulation
- Environmentally friendly valve stem packing with extreme emissions control.
- API 622
- utilized in API 624
- API 607
- ISO 15848

Service Limits		
Temperature °F(°C)	Minimum	-400°F (-240°C)
	Maximum	851°F (455°C)
Pressure PSI (bar)	Steam	1202°F (650°C)
	Valve	6526 (450)
pH		0-14

ECOTAPE

Thread Seal Tape made from Expanded PTFE combined with Graphite



ECOTAPE-LE is manufactured to provide an advanced structural matrix which incorporates Graphite into the Expanded PTFE. Due to the excellent properties of PTFE and graphite, this combination ensures a wide degree of chemical resistance, low coefficient of friction, excellent heat dissipation due to the high thermal conductivity of graphite and superior mechanical resistance.

Our unique manufacturing process provides the final product a high degree of integrity proven to supply the best sealing solution for thread seal tape.

Temperature Limits	
Minimum	536°F (280°C)
pH	0-14

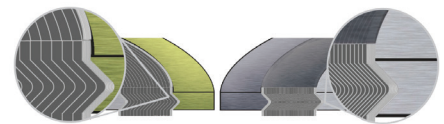


913M-LE

Low Emission Spiral Wound



The Metallflex 913M-LE spiral wound gasket is a major improvement on the traditional ASME B16.20 design. Where the traditional design is based primarily on dimensional criteria, the 913M-LE takes this and adds proven low-emission performance. Teadit Research & Development has discovered that density of the sealing element, a well-defined preformed metallic strip, and an enhanced soft filler material configuration, along with mandatory outer and inner rings, together play key roles in achieving sealing ability which can meet even the most stringent fugitive emission requirements. Furthermore, the design provides low-emission performance at a level significantly below the minimum ASME seating stress rating for spiral wound gaskets – making the 913M-LE a truly low seating stress design!



Spiral Wound:
Conventional vs. New Technology - Metallflex 913M-LE.
Increase of metal winding, higher density.

PTFE Products

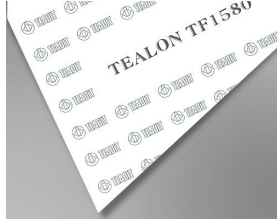
RESTRUCTURED PTFE-TEALON®



TEALON® TF1570

Application: The high compressibility of this style makes it particularly suitable for use with stress sensitive and/or fragile flanged joints, e.g. glass, plastic, etc.

Temperature Limits °F (°C):
 Max. **500** (260) Min. **-450** (-268)
 Max. Pressure psi (bar): **800** (55)
 pH: **0 - 14**



TEALON® TF1580

Application: It is suitable for general service in a wide variety of fluids, strong caustics, moderate acids, chlorine, gases, water, steam, hydrocarbons, hydrogen and aluminum fluoride.

Temperature Limits °F (°C):
 Max. **500** (260) Min. **-450** (-268)
 Max. Pressure psi (bar): **1200** (83)
 pH: **0 - 14**



TEALON® TF1590

Application: Restructured PTFE suitable for service with high pressures and temperatures, especially in chemical processing.

Temperature Limits °F(°C):
 Max. **500** (260) Min. **-450** (-268)
 Max. Pressure psi (bar): **1200** (83)
 pH: **0 - 14**



TEALON® TF1560 Monomer Service

Application: It is recommended for applications where media permeation through the gasket is not acceptable.

Temperature Limits °F(°C):
 Max. **500** (260) Min. **-450** (-268)
 Max. Pressure psi (bar): **725 (50)**
 pH: **0 - 14**

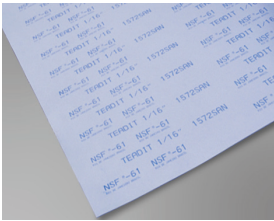
Tealon Availability

Sheet Size 62"x62"* **Thickness** 1/32, 3/32, 1/16, 1/8, 1/4
Tests and Approvals: FDA, TA-Luft, DVGW, BAM, Chlorine Institute, ROTT and HOBT-2

* 59"x59" is available upon request.

TF1560 Availability

Sheet Size 40"x40"*
Thickness 1/16, 1/8, 1/4



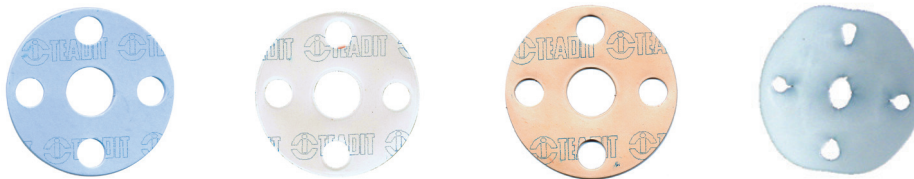
TEALON® TF1572SAN

Application: Specifically formulated to allow compliance for drinking water system components with NSF-61. An added benefit is that TF 1572SAN has a strong dielectric rating.

Temperature Limits °F (°C):
 Max. **500** (260) Min. **-450** (-268)
 Max. Pressure psi (bar): **800** (55)
 pH: **0 - 14**

HOT COMPRESSION TEST

This performance test measures the behavior of rPTFE and PTFE gaskets in a real world environment. The chart below shows a comparison between conventionally skived PTFE Tealon. The gaskets were installed simulating a real world application including thermo-cycling. The skived PTFE gasket showed a very high leak rate, losing 60% of its initial pressure by the end of the test. The Tealon gasket lost only 6% of its initial pressure by the end of the test and showed a leak 10 times less than that of the skived PTFE gasket. The picture on the left shows the gasket after the test and exhibits the dimensional stability of Tealon as compared to the noticeable creep of the skived PTFE gasket.



PHYSICAL PROPERTIES	TEST METHOD	TEALON®*1570	TEALON®*1580	TEALON®*1590
Color		Blue	White/Yellow	Fawn
Sealability (ml/hr)	ASTM F 37	0.12	0.04	0.20
Creep Relaxation (%)	ASTM F 38	40	24	18
Compressibility Range (%)	ASTM F 36	30-50	4-10	7-12
Recovery Min. (%)	ASTM F 36	30	40	40
Tensile Strength psi (N/mm ²)	ASTM F 152	2030 (14)	2030 (14)	2030 (14)

Expanded PTFE Products



24SH

100% Expanded PTFE Sheet
 Temperature Limits °F (°C):
 Short Term Max. **600** (315)
 Minimum. **-450** (-268)
 Max. Pressure psi (bar): **2900** (200) pH: **0 - 14**

24SH Availability

Sheet Size (in)	59x59
Thickness	1/4", 1/8", 1/16"**, 1mm, .5mm

Tests and Approvals: TA-Luft, Blow-Out-Test VDI 2200, FDA, USP Plastic Class VI, Germanischer Lloyd, WRc, BAM, AREVA

** 1/32, 3/32 available on special request.



24A

Expanded PTFE Valve Stem Packing
 Temperature Limits °F (°C):
 Short Term Max. **600** (315)
 Minimum. **-450** (-268)
 Max. Pressure psi (bar): **1450** (100) pH: **0 - 14**

24A Availability

Width (in)	1/16	3/32	1/8	5/32	3/16	7/32	1/4	9/32	5/16	3/8	1/2	5/8
Spool Length (ft)	50	25 or 50	25	25	25	15	12	9	7	7	12	9



24BB

Expanded PTFE Gasket Tape
 Temperature Limits °F (°C):
 Short Term Max. **600** (315)
 Minimum. **-450** (-268)
 Max. Pressure psi (bar): **2900** (200) pH: **0 - 14**

24BB Availability

Width (in)	1/2", 3/4", 1", 2"	1/2", 3/4", 1", 2", 4", 6", 8"
Thickness (in)	.020" (= 5mm)	.040" (= 1.0mm) 1/16" (= 1.5mm) 1/8" (= 3mm)
Spool Length (ft)	100'	50' 25'

Tests and Approvals: WRc

* other sizes are available upon request.



24B

Expanded PTFE Joint Sealant
 Temperature Limits °F (°C):
 Short Term Max. **600** (315)
 Minimum. **-450** (-268)
 Max. Pressure psi (bar): **2900** (200) pH: **0 - 14**

Tests and Approvals: BAM, DVGW, WRc, BOC, FDA (incl. adhesive backing), TA-Luft, AREVA

24B Availability

Width (in)	1/8	3/16	1/4	3/8	1/2	5/8	3/4	1
Thickness (in)	.059	.079	.157	.197	.197	.236	.276	.197
Spool Length (ft)	50, 100, 500	75, 150, 750	50, 100, 500	25, 50, 250	15, 30, 150	15, 30, 150	15, 30, 100	15, 30, 75

* other sizes are available upon request.

25BI



Multi-Directionally Expanded Gasket Tape
 Temperature Limits °F (°C):
 Short Term Max. **600** (315)
 Minimum. **-450** (-268)
 Max. Pressure psi (bar): **2900** (200)
 pH: **0 - 14**

Tests and Approvals: FDA, TA-Luft

25BI Availability

Width (in)	1/2, 3/4, 1	1 1/2	2
Thickness (in)	1/16, 1/8, 1/4	1/8, 1/4	1/4
Spool Length (ft)	15, 25, 50		

* other sizes are available upon request.

Metallic Gaskets

SPIRAL WOUND GASKETS - Sealing solutions for Industries

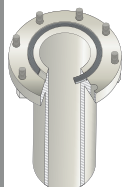
Introduction

The TEADIT® plant has manufactured spiral-wound gaskets since 1965. It is located in the largest and most progressive industrial and metallurgical complex in Brazil.

In 1975, TEADIT® moved into its present, modern facilities. The plant was further enlarged in 1982 when TEADIT®

merged with another company which was engaged in the manufacture of metal expansion joints, shock absorbers and special bellows. Today, TEADIT® is one of the largest fabricators of spiral-wound gaskets, expansion joints and bellows in the world.

911/ 911M/ 911T



This is the simplest style of spiral wound gasket, consisting of a circular winding without guide or inner rings. Spiral wound gaskets Style 911 are mainly used in tongue and groove or male and female flanges. They are also used in equipment with space and weight limitations. Special flange machining may be necessary (contact Teadit Technical Dept).

A style 911-M gasket is a sealing winding with an inner ring.

Style 911-T has better sealability than a conventional heat exchanger double-jacketed gasket. However, a specially machined groove with an appropriate compression stop in needed for 911-T.

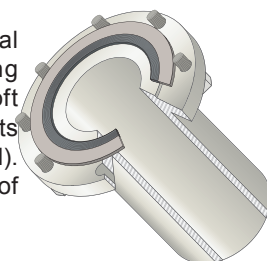
914

Style 914 spiral wound gaskets are windings in non-circular forms like oval, rectangular and square with rounded corners, diamonds, oblong or pear shaped. Style 914 gaskets are used in boiler handholes and manholes, equipment, engine head-gaskets and exhaust systems. Inner rings should also be used for many of these applications.



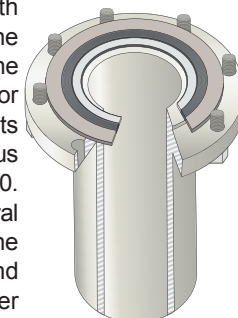
913

The construction of this gasket is circular metal winding with an outer guide ring. The sealing element is made of the specified metal and soft sealing material. The standard pipe size gaskets are made to ASME B16.20 (see also style 913M). These gaskets are used in a very wide variety of applications.



913M

The 913M is the standard spiral wound gasket with an inner ring. The purpose of this ring is to fill out the space between the flanges, avoiding turbulence in the flow of the fluid or as protection against corrosion or erosion. It is also used as a compression limit. Gaskets with PTFE filler have a tendency to inward buckle thus the use of an inner ring is required by ASME B16.20. Inner rings are also required with ASME standard spiral wound gaskets with flexible graphite fillers unless the purchaser specifies otherwise and some sizes and pressure class require inner rings regardless of filler material.



DOUBLE JACKETED GASKETS

920 Round Single Jacketed Gasket

The style 920 is a round single jacket gasket. Used in applications where the seating stress and width are limited. It can be manufactured in circular or oval shape. The maximum gasket width is 1/4 (6.4 mm) and the standard thickness is 3/32 in (2.4 mm).

923 Double Jacketed Gasket

The style 923 is a flat double jacket gasket. Its most typical applications are in Heat Exchangers. ASME B 16.20 shows the gasket dimensions for ANSI B 16.5 flanges. The standard thickness is 1/8 in (3.2 mm). This style is also used in large size reactors in chemical plants. Another important use is for flanges in the large, low pressure ducting in Steel Mill Blast Furnaces. To compensate for distortions and irregularities of these flanges, gaskets are 5/32" (4 mm) to 1/4" (6 mm) thick.



923
Double Jacket

926 Corrugated Jacketed Gasket with FG Filler

Similar to style 923 but the metallic jacket is corrugated. The corrugations act as a labyrinth.

927 Double Jacketed facing with FG

Similar to style 923 with addition of flexible graphite facing.



927
Double Jacket with
graphite facing

929 Corrugated Jacketed Gasket with Corrugated Filler

Similar to style 926 with a corrugated metallic filler. Used in applications where it is necessary to have a gasket without non-metallic materials, temperature limits and chemical resistance depend upon the metal only.

CAMPROFILE GASKETS - Excellent Results in Critical Applications

STYLE 942, 946

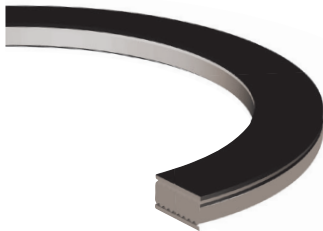
Teadit® Camprofile gaskets offer outstanding flexibility and recovery, assuring seal integrity under pressure and temperature fluctuations, flange rotation, bolt stress relaxation and creep. Teadit® Camprofile gaskets are used by the chemical and petrochemical industry, as well as in power stations and refineries, on both standard pipework and special applications, e.g. shell and tube heat exchangers, etc.. Camprofile gaskets are constructed from a precision serrated metallic core with soft facing materials - flexible graphite or expanded PTFE - bonded to either side.

Depending on the kind of metal used, Teadit® Camprofile gaskets can be used for all media from pH 0 to 14.

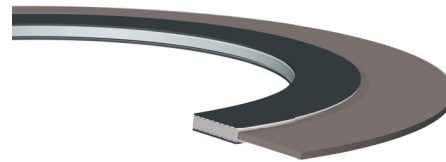
Teadit® Style 942 is designed to be used in most male/female and tongue and groove flanges in heat exchangers.

Teadit® Style 946 is designed to be used in RF or FF faced flanges like ASME B16.5 or ASME B16.47.

The loose fitting outer ring allows for the thermal expansion of the serrated core.



942



946

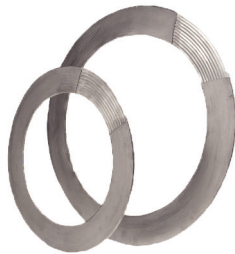
with outer ring

METALBEST GASKET

STYLE 905

Corrugated metal gaskets with Flexible Graphite facings, style 905 Metalbest, have gained popularity in the marketplace due to their ability to seal at low bolt loads.

One of the most frequent uses of Style 905 Metalbest Gaskets are in Shell and Tube Heat Exchangers, due to their ability to avoid mechanical shearing problems associated with other gasket types in heavy thermal cycling applications. The standard core material is 316L Stainless Steel and the covering layer is Flexible Graphite. Other alloys and covering layers are available upon request.



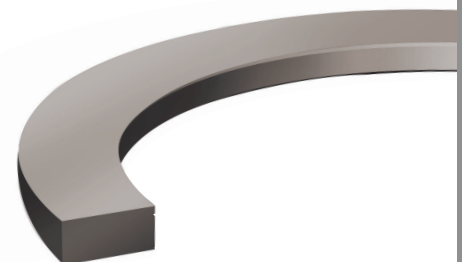
COLOR CODING CHART

Material	O.D. Ring Color	
304 Stainless Steel	Yellow	
316L Stainless Steel	Green	
317L Stainless Steel	Maroon	
321 Stainless Steel	Turquoise	
347 Stainless Steel	Blue	
MONEL ®	Orange	
Nickel	Red	
Titanium	Purple	
Alloy 20	Black	
INCONEL ® 600	Gold	
HASTELLOY ® B	Brown	
HASTELLOY ® C	Beige	
INCOLOY ® 800	White	
Material	Strip Color	
Flexible Graphite	Gray	
PTFE	White	
Ceramic	Lt. Green	
Verdicarb (Mica Graphite)	Pink	

SOLID METALLIC GASKET

STYLE 940

Style 940 is a solid metallic gasket that has a smooth sealing surface and can be manufactured practically in any shape. Typical applications are in valves, heat exchangers, hydraulic presses and tongue and groove flanges. The strong points are mechanical and chemical attack resistance and they can be used in elevated temperature and pressure service. The width of the gasket sealing surface should be at least equal to 1.5 times its thickness. These gaskets, depending upon their material, have high maximum seating stress.



Style 940

Other Teadit Products



Ring Joints

Metallic Ring-Joints are produced according to the standard established by the American Petroleum Institute, API 6A and API 17D and the American Society of Mechanical Engineers,

ASME B16.20, for applications at elevated temperatures and/or pressures. A typical application of Ring-Joints is the "Christmas Tree" used in oil fields.

The seal is obtained in a line of contact by a wedge action with high seating pressures thus, forcing the gasket material to flow. The small sealing area with high contact pressure results in great reliability. However the contact surfaces of the gasket and the flange should be carefully finished. Some styles of Ring-Joints are pressure activated, that is, the greater the pressure the better the sealability.

STYLE 950

Ring with oval section (Figure 1).

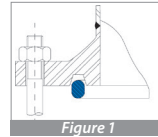


Figure 1

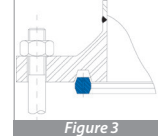


Figure 3

STYLE 952 BX

It has a square cross section with bevelled corners (Figure 3).

STYLE 951

Ring with octagonal section (Figure 2).

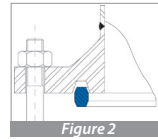


Figure 2

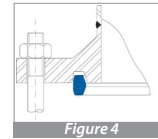


Figure 4

STYLE 953 RX

It is designed to use the fluid pressure to increase the sealability (Figure 4).

FLANGE PROTECTOR

It is a fact, that in certain circumstances in the industrial process, spray fluid might occur. Flange Protectors can help to minimize the impact that this accident can cause to the environment and the operators working nearby.

Teadit Flange Protectors are designed to contain such chemical spray within the flange protector, preserving the integrity of the operators and the environment. In the meantime it gives the operator time to safely intervene on the flange without exposing him or herself to the spray fluid.



Step One



Step Two



Step Three

FIRESAFE

FIRESAFE Fire Protector are manufactured by combining multiple layers of technical fabrics that form a protective barrier. This barrier prevents direct exposure to a possible fire on the screws of the Wafer valve, thermal expansion of the bolts and leakage of the fluid into the environment.

Each fabric layer has a function, fire barrier (inner layer) to the weathering and ultra violet resistance (outside layer), which makes double protection: from inside to outside and from outside to inside.

It is closed and sealed with velcro and clamps. It is easy to install and quick to remove for maintenance of the valve.



Valve with and without the installed **FIRESAFE** Fire Protector.

The best investment for the safety of your company and your employees

Other Teadit Products

Metallic Expansion Joints

Teadit has a diversified product line of metallic expansion joints including: Single Axial, Hinged, Pressure Balanced and Gimbal. Metallic Expansion Joints are designed by highly skilled engineers and technicians. The Expansions joints will solve thermal expansion and vibration issues in the toughest operating conditions. They are manufactured according to the standards EJMA and ASME.

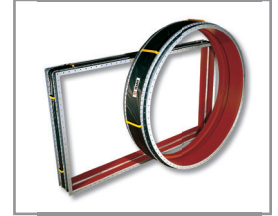


Gimbal Expansion Joints

With Internal Refractory Liner

Flue Duct Expansion Joints

Flue Duct Expansion Joints were developed to work in stringent service conditions. They are manufactured in round, square, or rectangular shapes. Some of the industries that utilize Flue Duct expansion joints are Pulp and Paper, Petrochemical, Cement, Refineries and Food Product Plants. Flue Duct Expansion Joints are used in boilers, gas turbines, incinerators and foundry ducts.





Sealing for a Safer and Greener Tomorrow

Teadit is a global leader in the development and production of a broad range of sealing solutions. Our mission is to assist you in achieving leak-free and low-emission levels of performance.



The application parameters indicated in this brochure are typical. Specific applications should be looked at independently for an evaluation on compatibility. Please consult Teadit engineering for recommendations about specific use.

Rio de Janeiro, BRAZIL • Campinas, BRAZIL • Buenos Aires, ARGENTINA • Houston, USA • Kufstein, AUSTRIA • Köln, GERMANY • Baroda, INDIA • Shanghai, CHINA

Houston, USA

10545 Red Bluff Road - Pasadena, Texas 77507

Tel: (281) 476-3900

Fax: 281-476-3999 • 800-999-0198

sales@teadit.com

www.teadit-na.com