



Urban Sketching

Workshop

270312

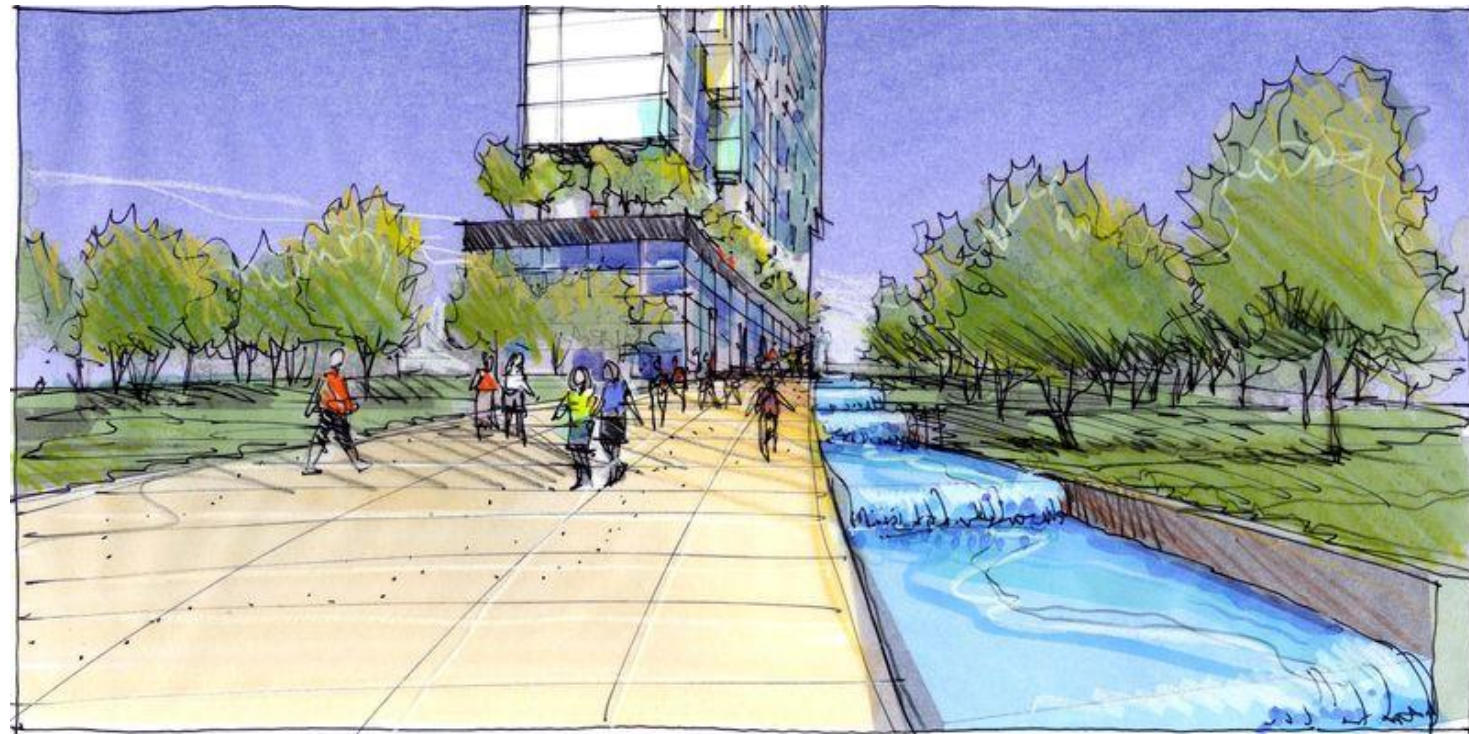
M. Arch. Antonio Juárez
M.Sc.Arch. Florian Gerloff
ITESM.CQ
EDA

Urban Sketching Workshop



The focus of this workshop will be drawing on location.

walk away with more confidence and have a greater sense of comfort and idea of what to capture on location.



USES OF SKETCHES

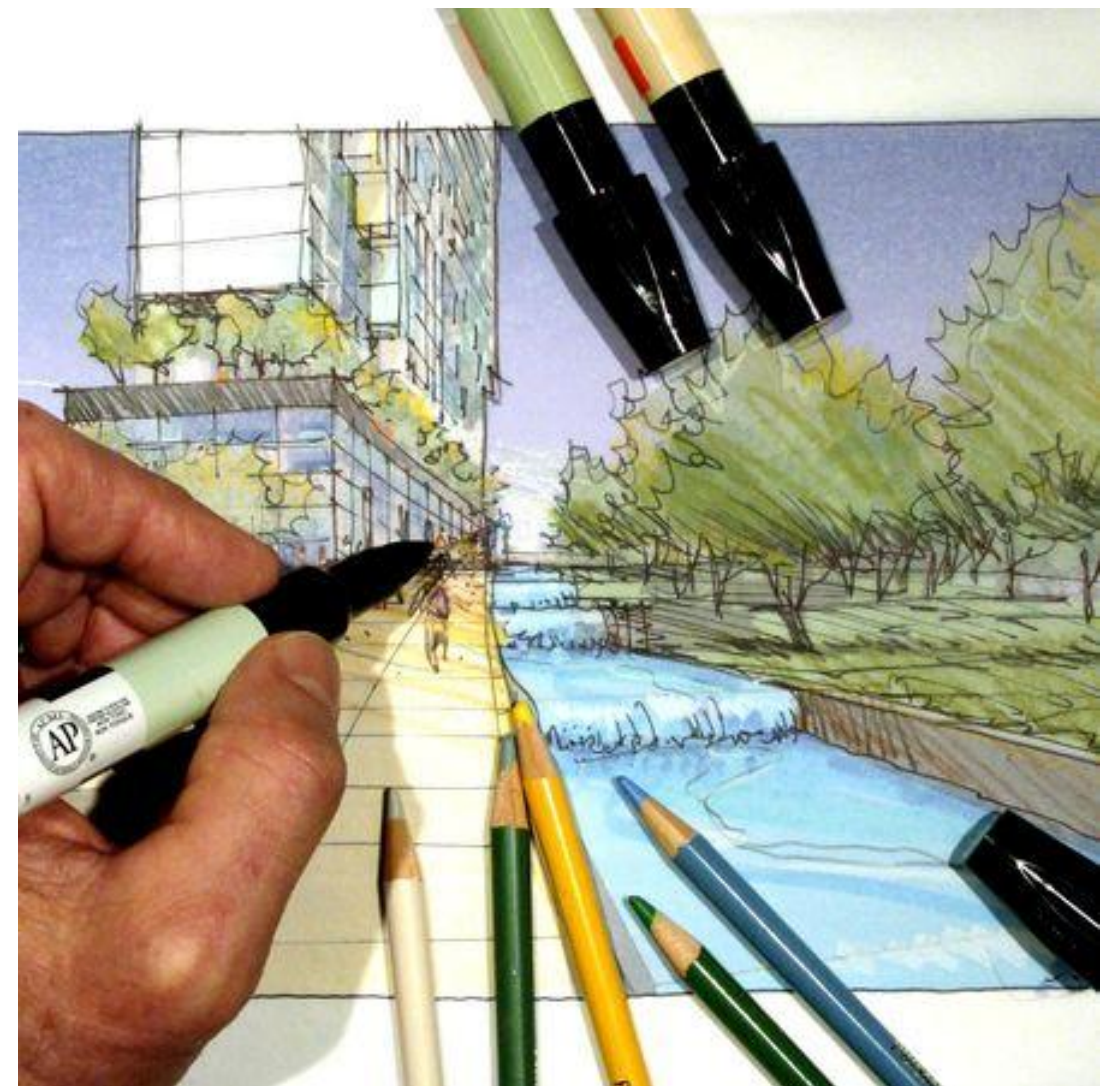
SKETCHES ARE USED TO VISUALIZE DESIGN IDEAS AND ARE A VERY BASIC TOOL FOR COMMUNICATING YOUR PLANS FOR A MASS OR SPACE.

SKETCHING IS A BASIC AND NECESSARY SKILL TO HAVE, IT DEMANDS MENTAL AND PHYSICAL DISCIPLINE TO DO IT WELL. IT ALSO REQUIRES PRACTICE.

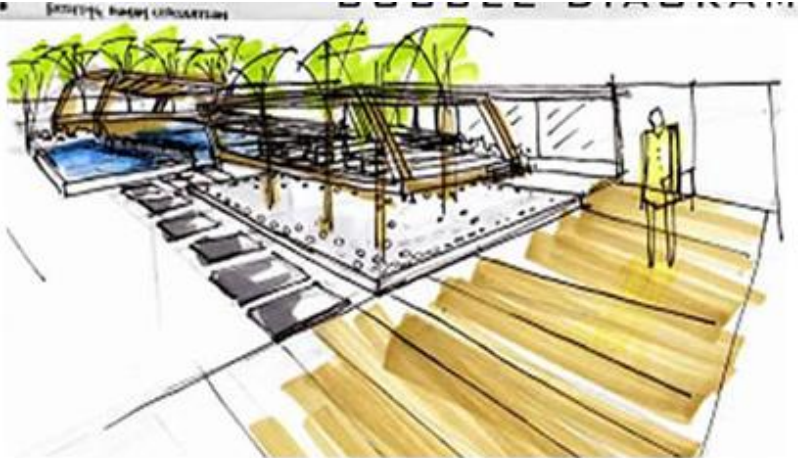
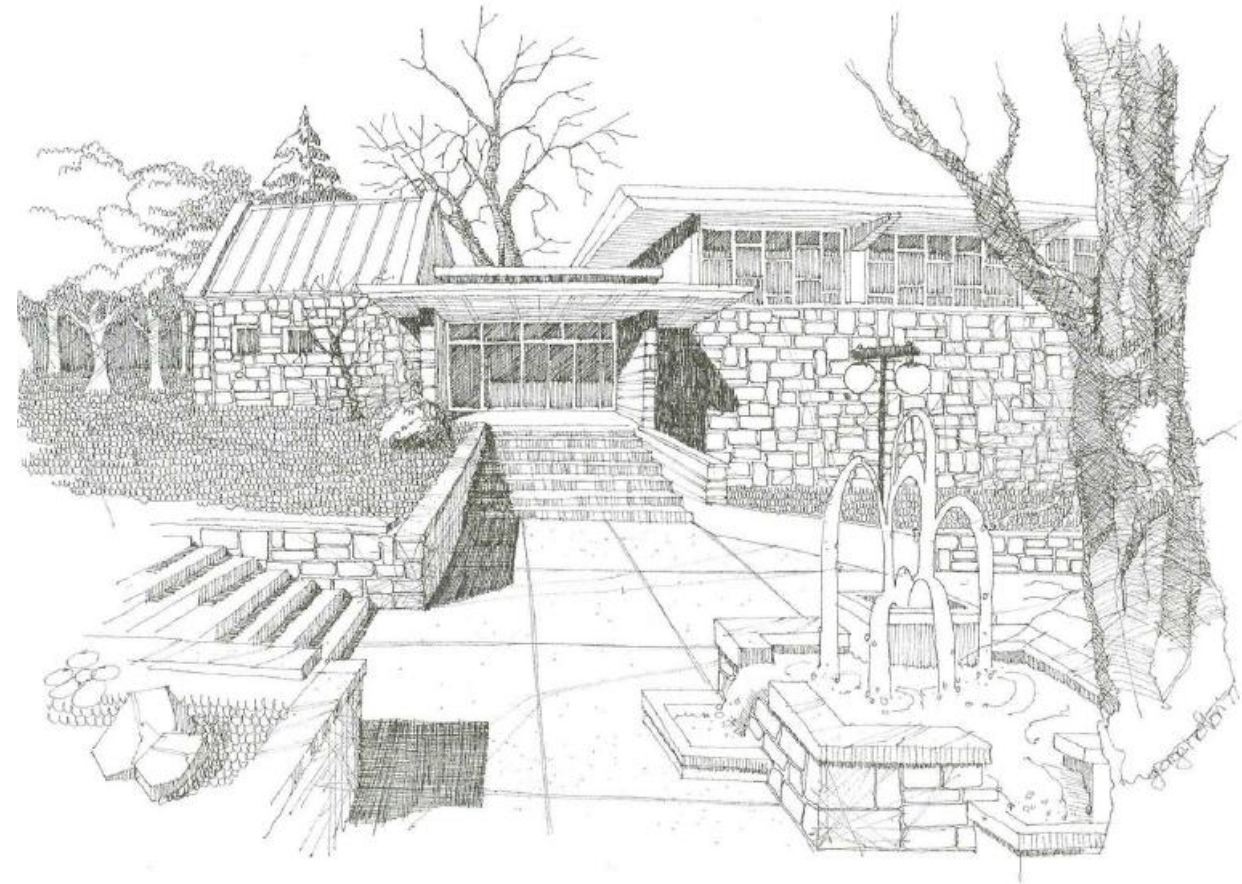
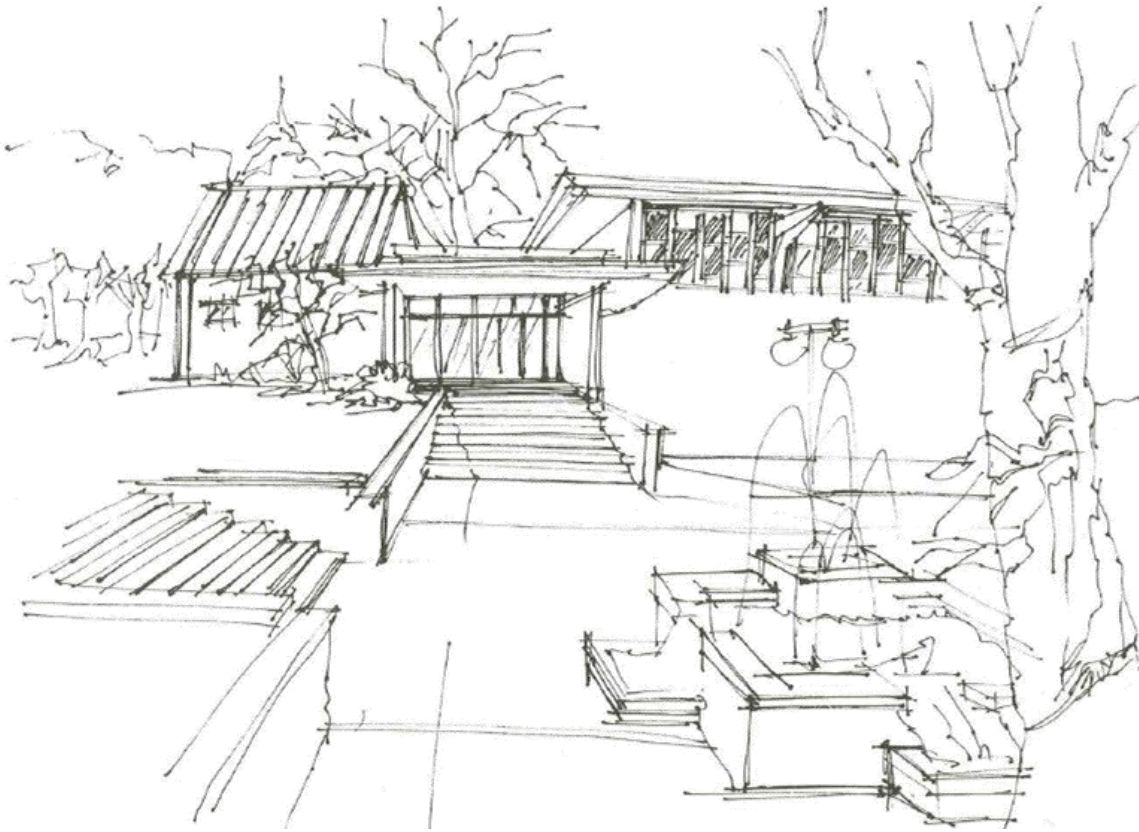
WHAT IS A SKETCH?

IT IS A QUICKLY MADE, DIRECT, AND UNLABORED DRAWING, ARCHITECTURAL SKETCHES MUST INCORPORATE PROPORTION AND SCALE.

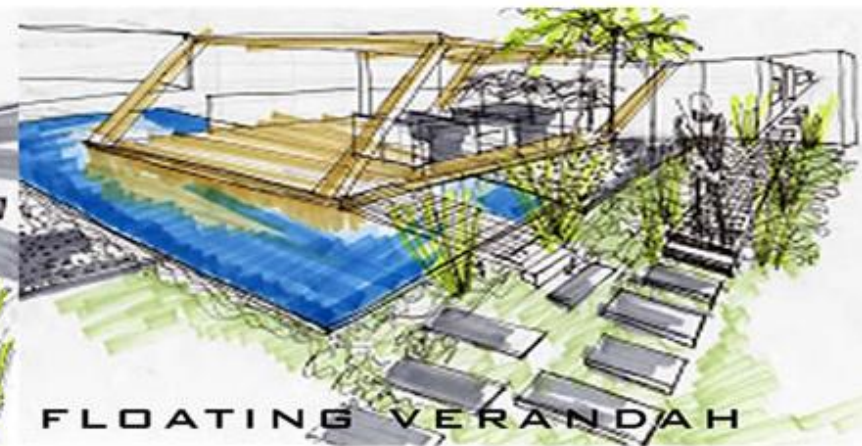
ALL SKETCHES ARE ESSENTIALLY LINE DRAWINGS, BUT ALMOST ANY SKETCH MAY BE ENHANCED BY THE USE OF COLOR.



WHAT IS A SKETCH?

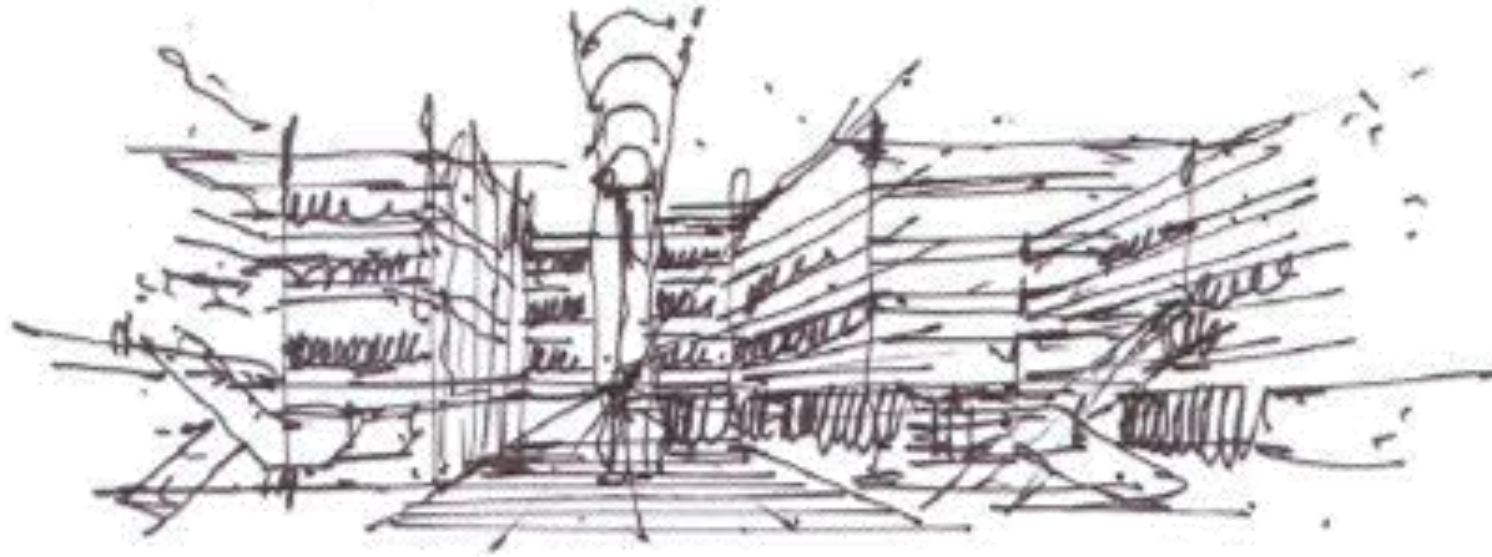


GARDEN TOILET



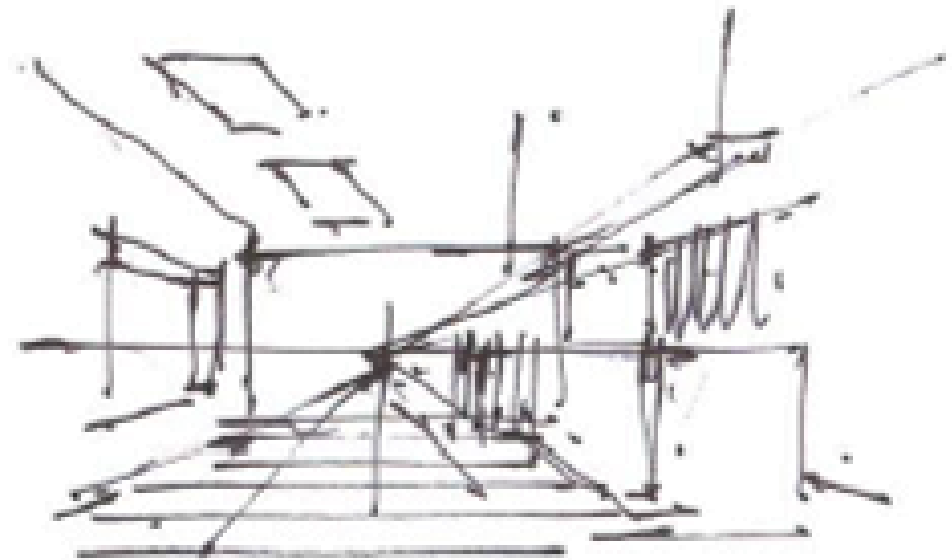
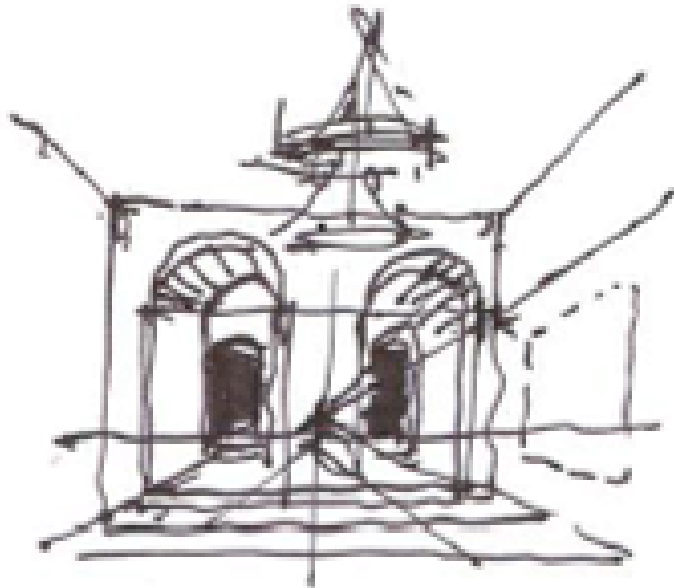
FLOATING VERANDAH

TAKING AND MAKING NOTES



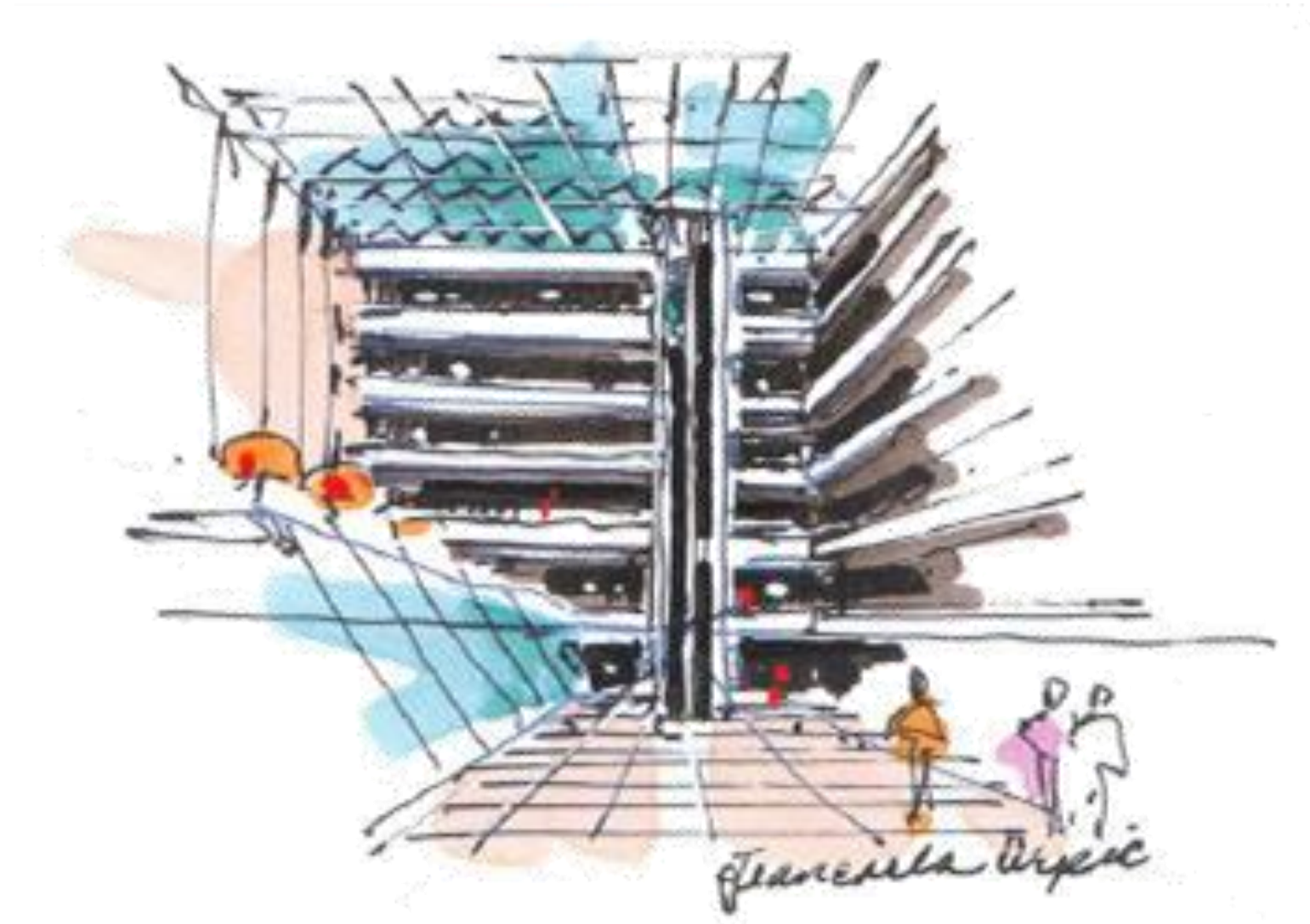
SKETCHES MADE FOR PERSONAL USE RANGE FROM JOTTINGS OF A DESIGN IDEA OR "INSPIRATION"

TO VISUAL NOTES MADE IN THE FIELD



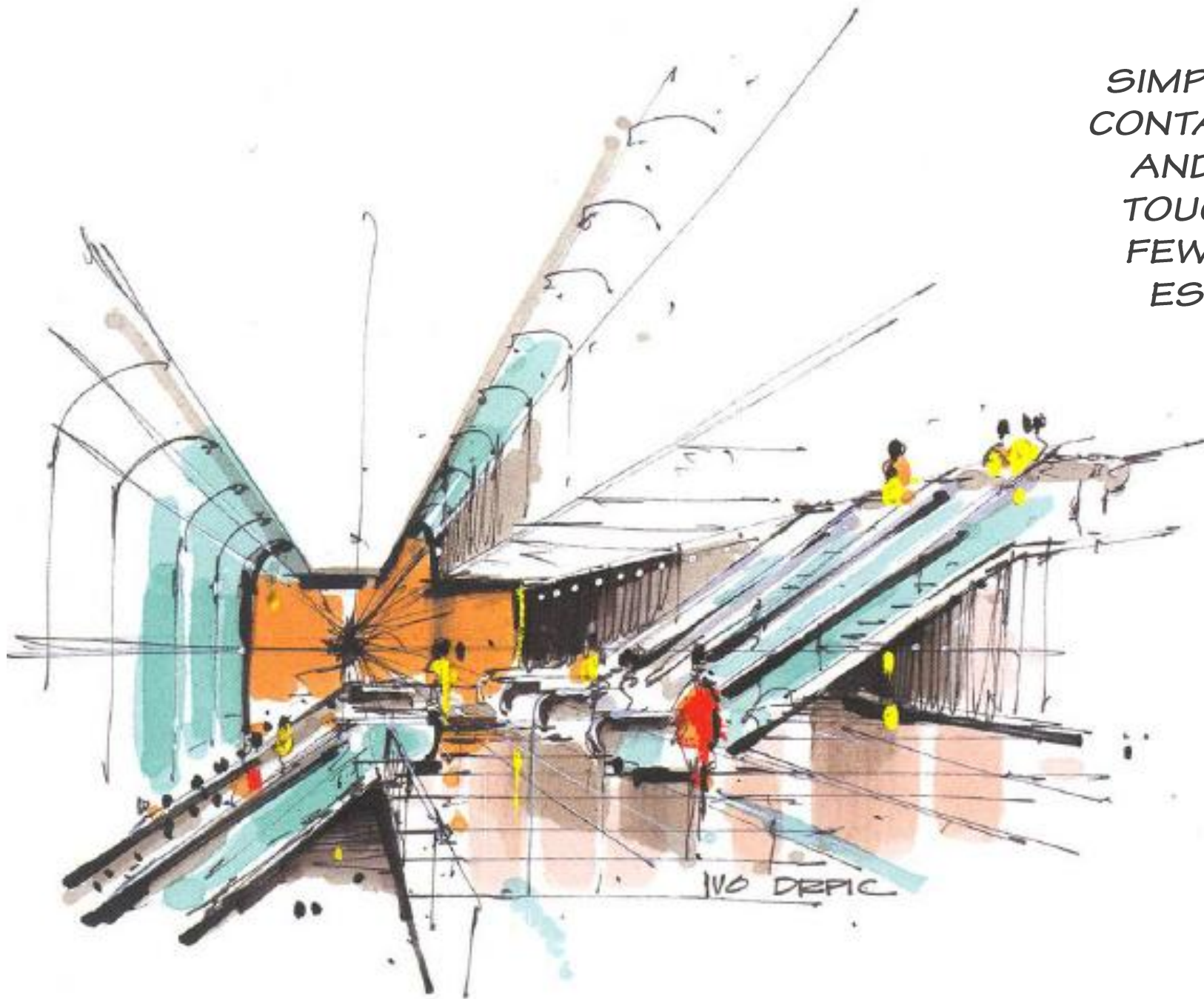
TAKING AND MAKING NOTES

TO A ROUGH SKETCH TO SHARE ...

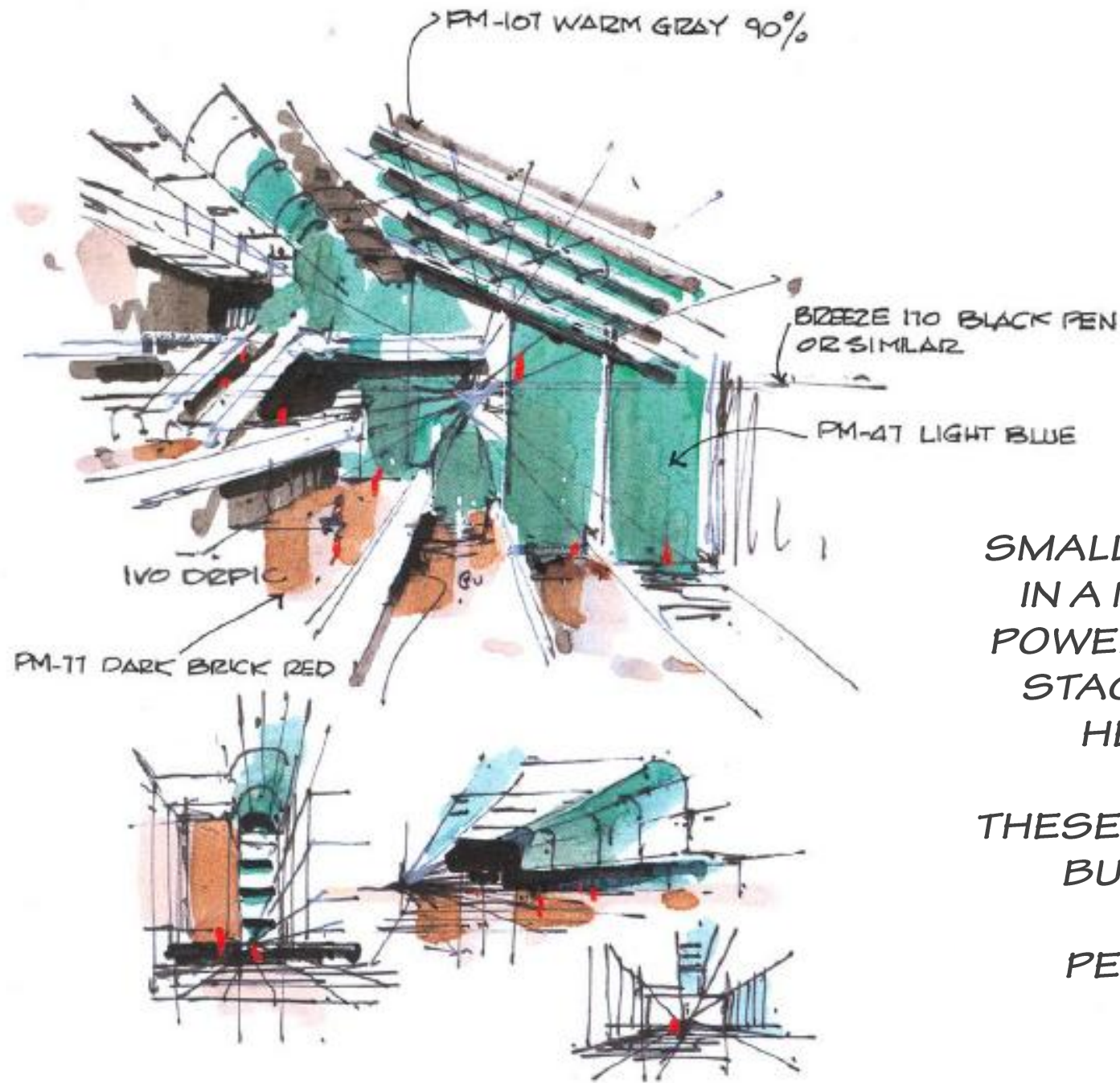


CONCEPT SKETCHES

SIMPLE DRAWINGS WHICH CONTAIN FEW PEN STROKES AND, IN SOME CASES, A TOUCH OF COLOR, THESE FEW LINES REFLECT THE ESSENCE OF AN IDEA.

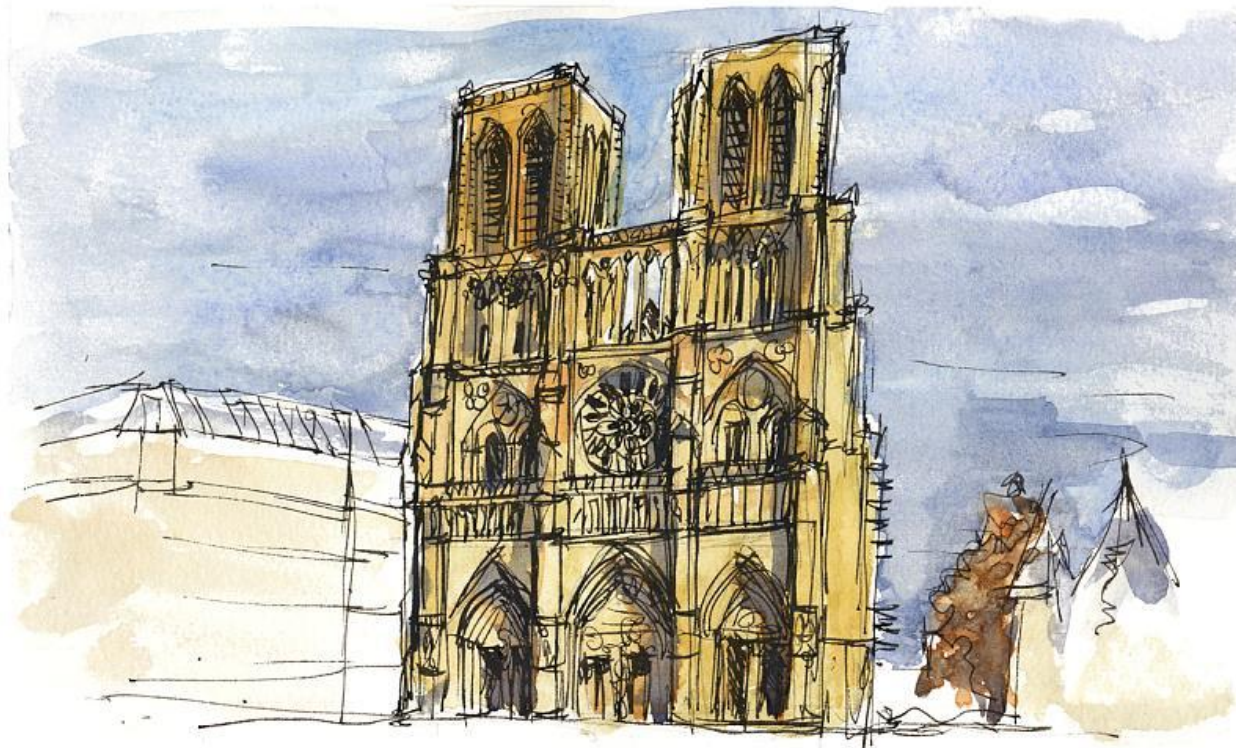


THUMBNAIL AND CONCEPT SKETCHES



SMALL SKETCHES WHICH CAN BE DONE IN A MATTER OF MINUTES, THEY ARE POWERFUL TOOLS IN THE PRELIMINARY STAGES OF DESIGN BECAUSE THEY HELP VISUALIZE THE PROJECT.

THESE SKETCHES REQUIRE SOME SKILL, BUT THEY ARE NOT DIFFICULT TO MASTER, ALL IT TAKES IS PERSEVERANCE AND PRACTICE.



KEEP YOUR PEN STROKES LOOSE. DO NOT TRY TO MAKE PERFECTLY STRAIGHT LINES. THE BEAUTY OF SKETCHES RELIES PARTLY ON THE SOFTNESS AND IRREGULARITY OF THE LINES.

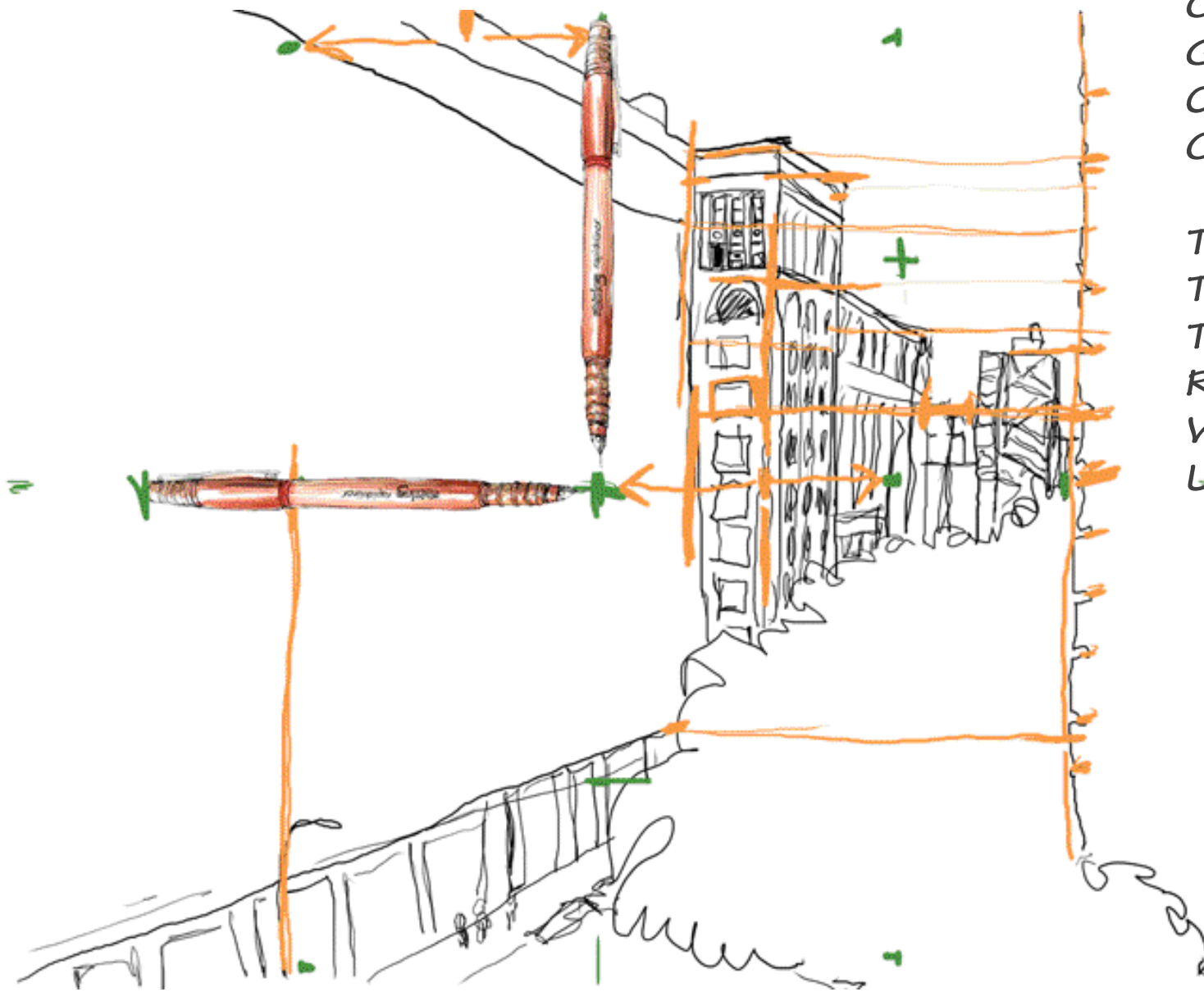
DO NOT LIMIT YOURSELF TO SKETCHING ONE FORM, EXPERIMENT WITH ALL KINDS OF SHAPES.

LEARNING TO SKETCH



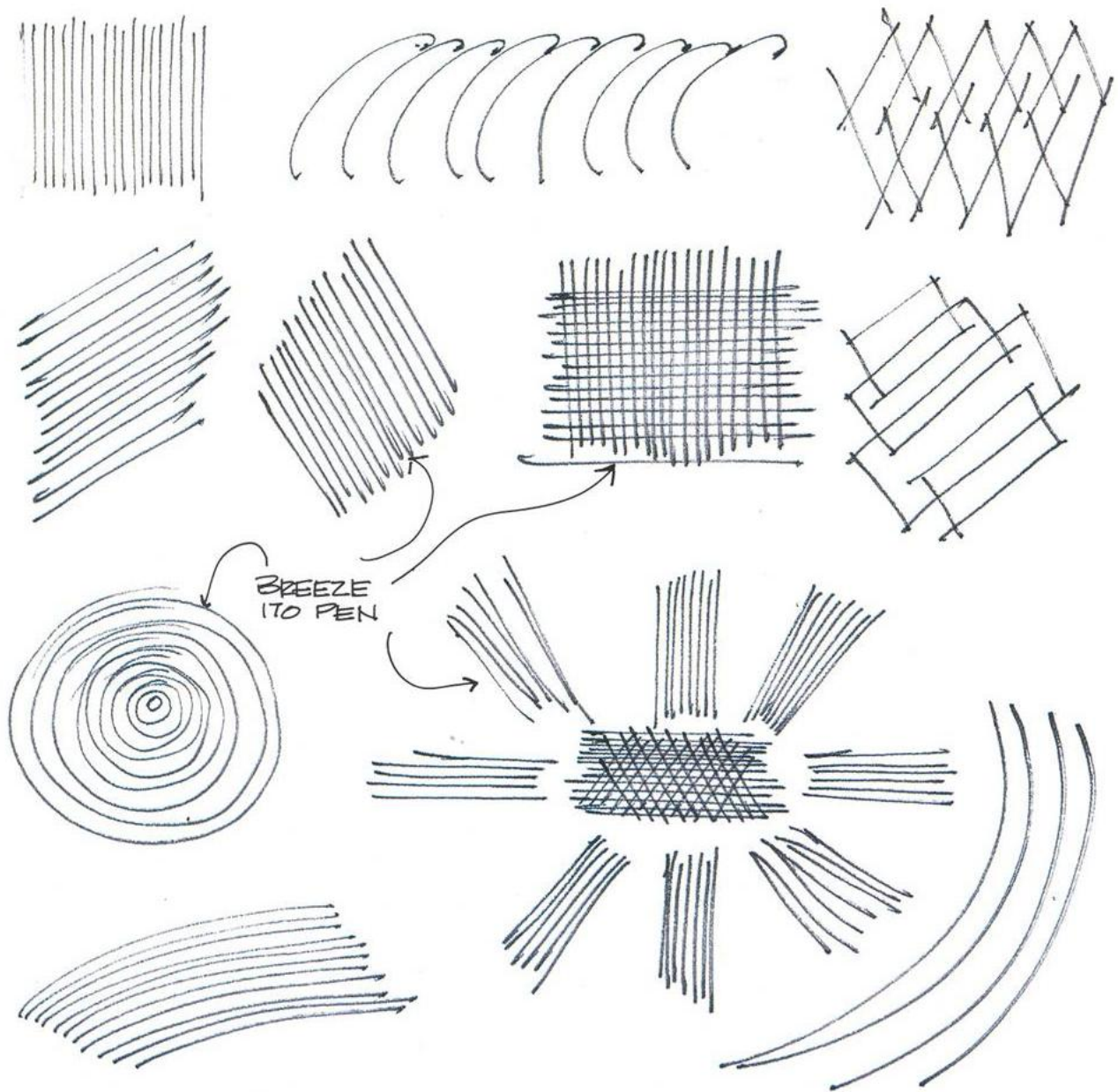
ONE IMPORTANT ASPECT OF A GOOD SKETCH IS THE ABILITY TO CAPTURE THE PROPER PROPORTION OF THE SUBJECT.

THIS CAN ONLY BE ACCOMPLISHED THROUGH MANY HOURS OF TRAINING THE EYE TO SEE AND THE HAND TO RECORD WITH CONSTANT VERIFICATION AND CORRECTION UNTIL IT BECOMES INSTINCTIVE.

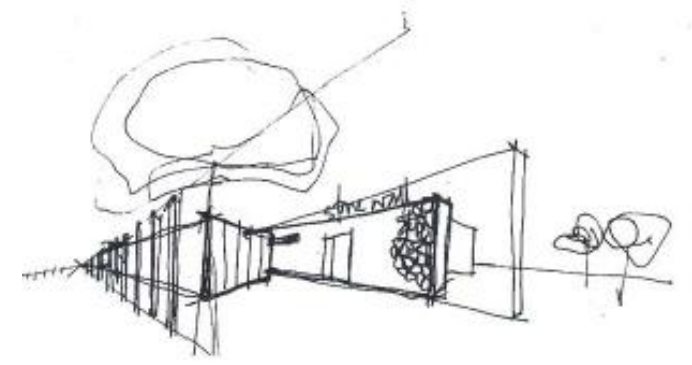
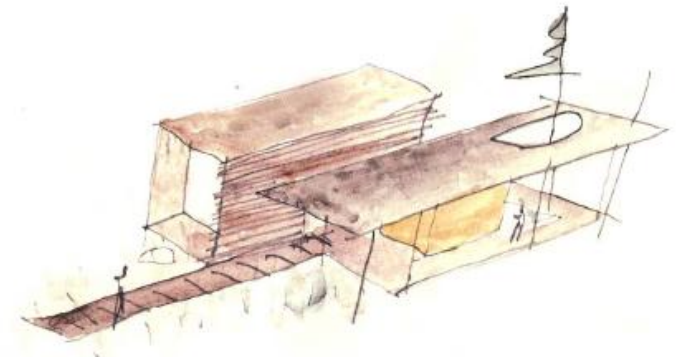


LEARNING TO SKETCH

TO SKETCH FAST AND EFFECTIVELY, THE SKETCHER NEEDS TO LOOSE HIS OR HER HAND FOLLOWING THIS EXERCISES.

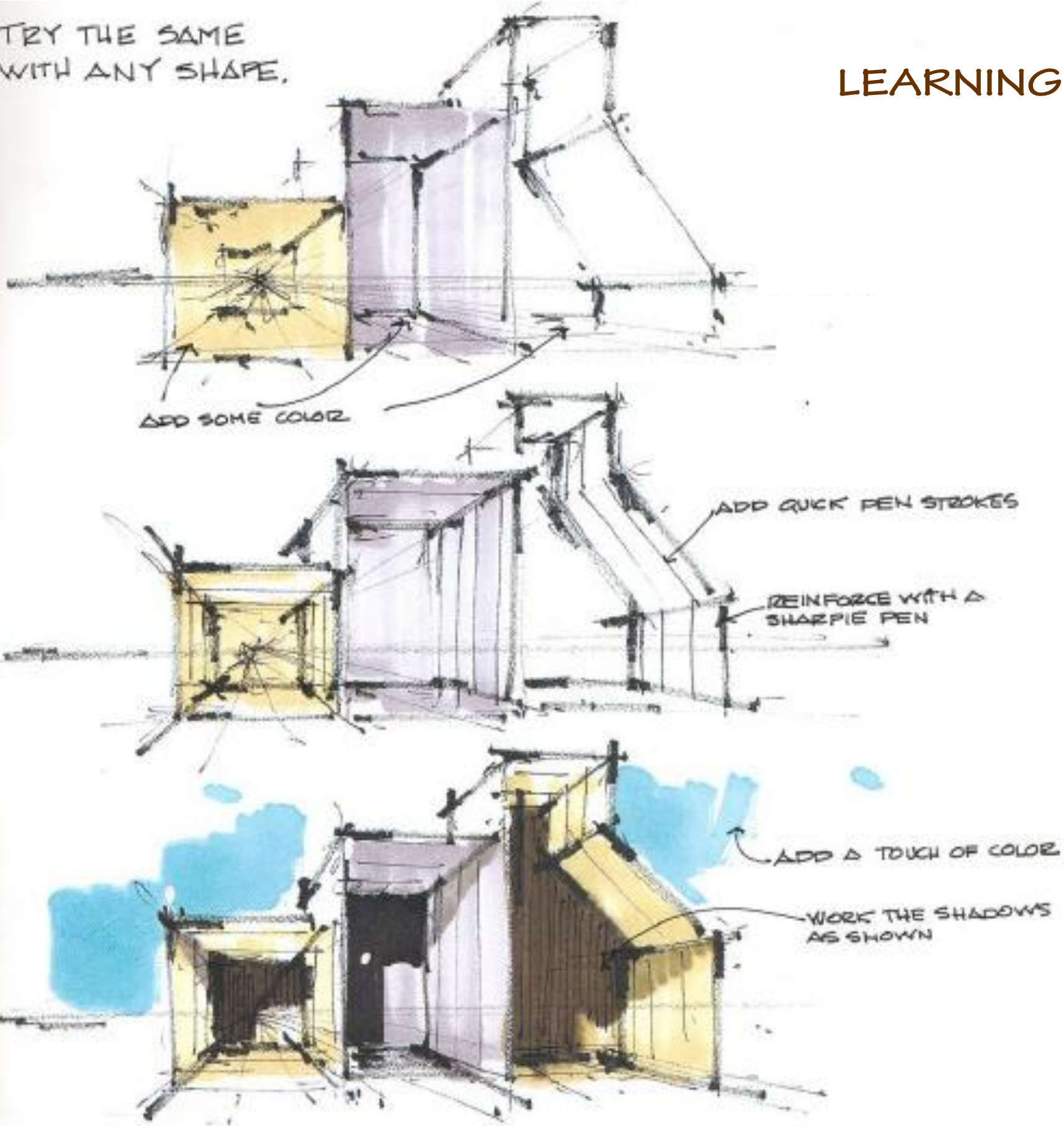


BREEZE
TO PEN



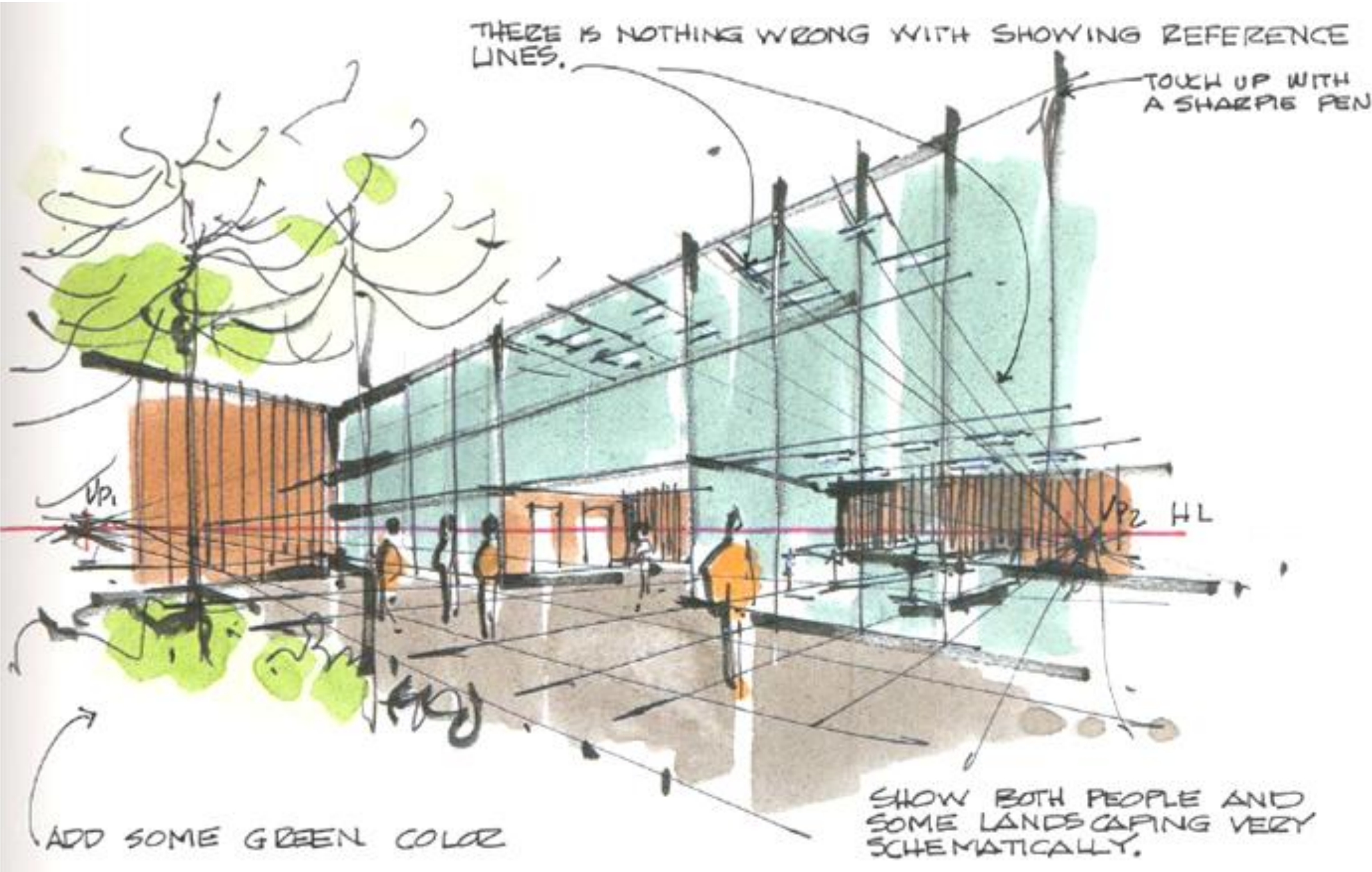
TRY THE SAME WITH ANY SHAPE.

LEARNING TO SKETCH



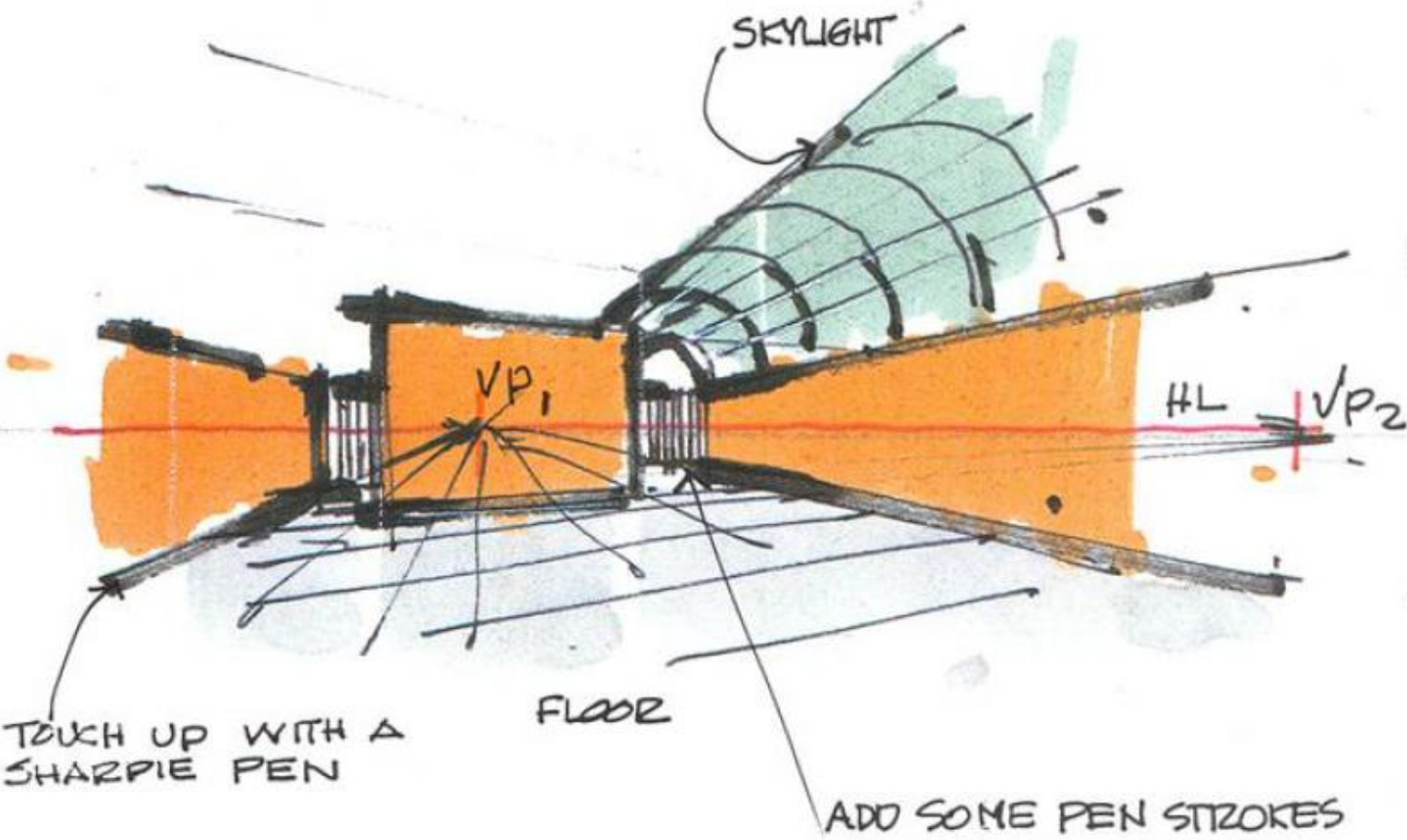
LEARNING TO SKETCH

Urban Sketching Workshop



LEARNING TO SKETCH

YOU CAN EMPHASIZE THE DEPTH WITH CLOSER PEN STROKES AS SHOWN.

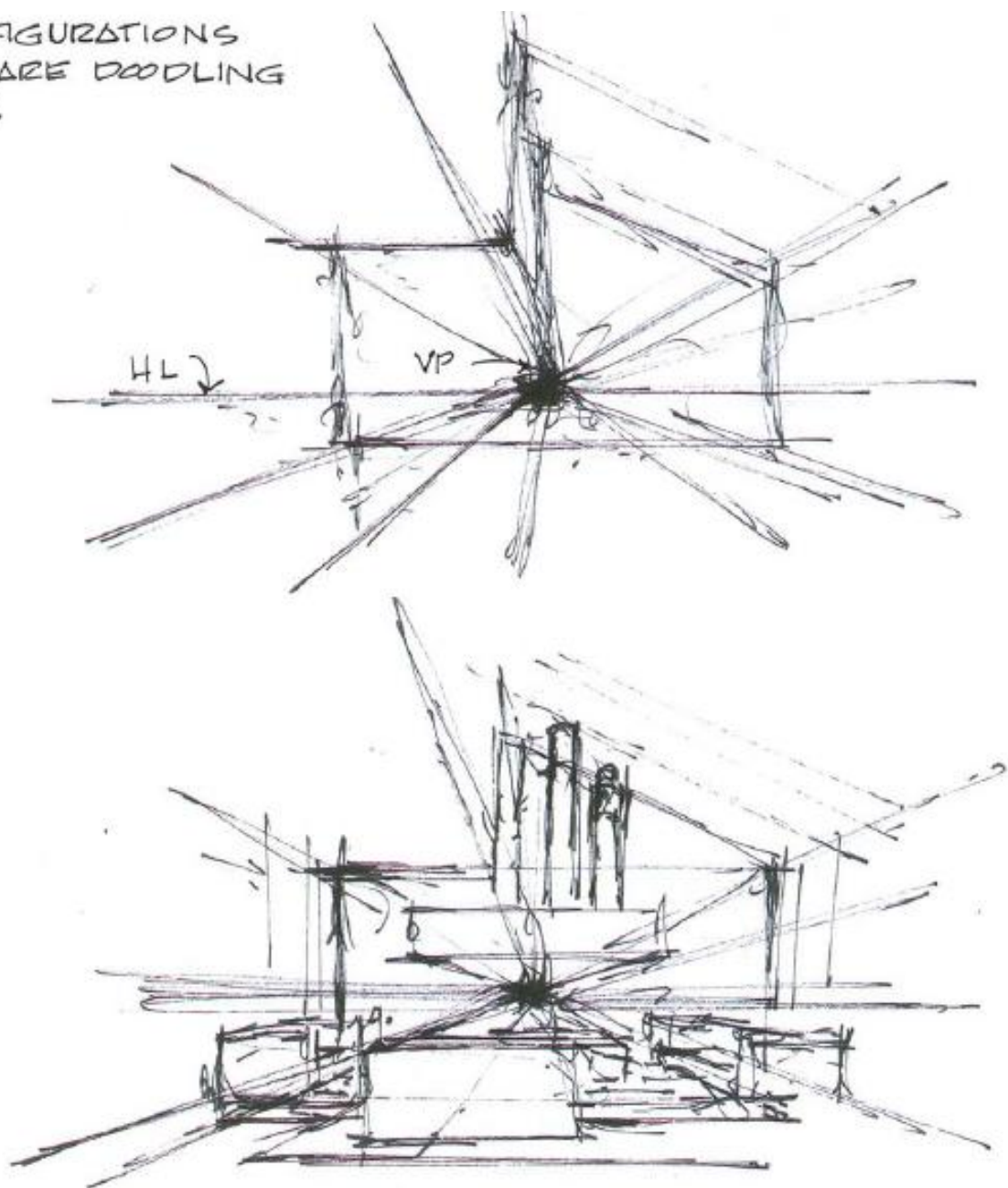


START WITH A HORIZONTAL LINE (HL), LOCATE THE VANISHING POINTS (ONE OR TWO), AND START RADIATING LINES FROM IT.

AS SHOWN WITH QUICK STROKES, START SHAPING THE SPACE. PLAY WITH THE LINES UNTIL YOU HIT THE RIGHT CONFIGURATION.

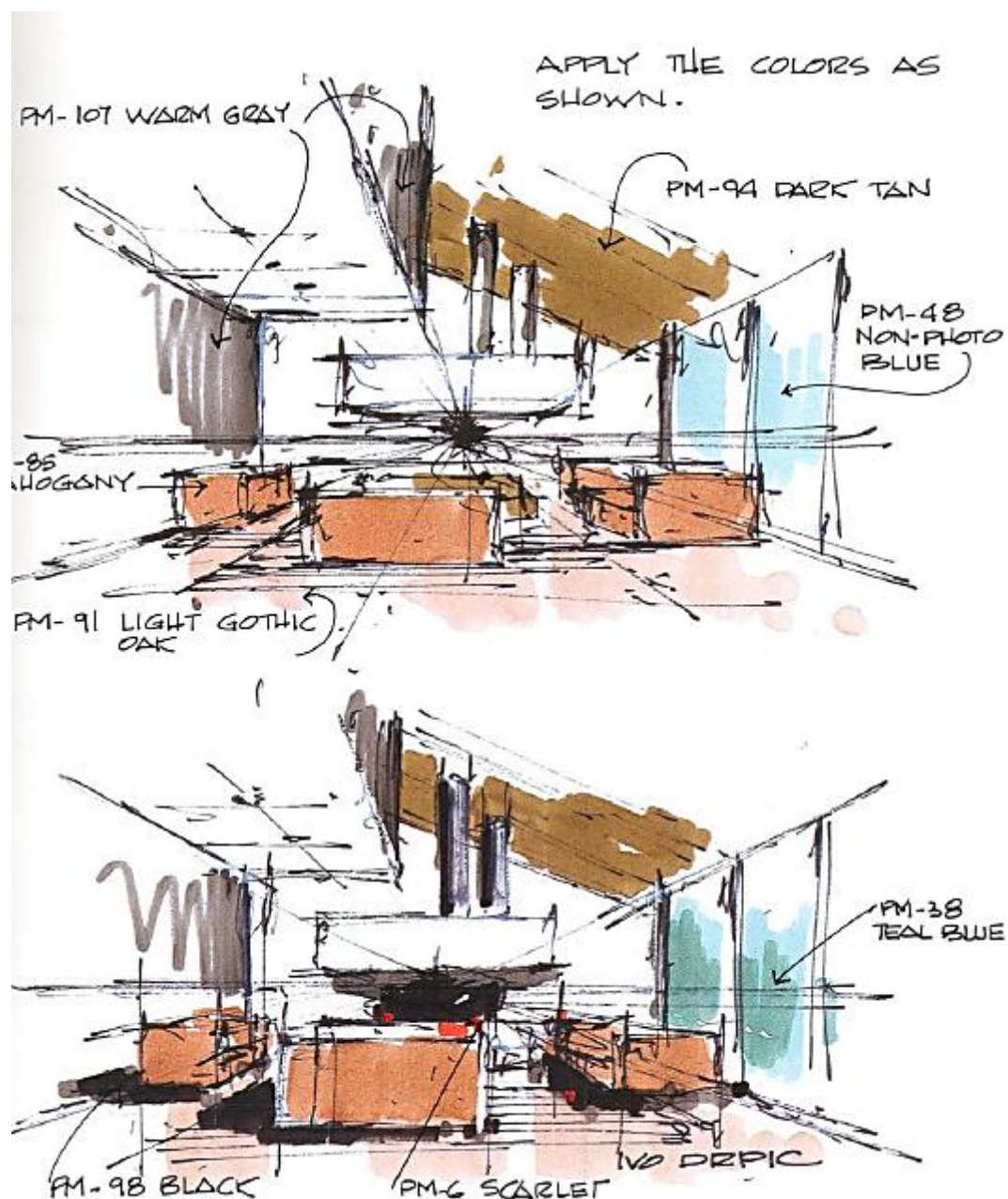
DURING THIS PROCESS, YOUR MIND WILL START PRODUCING THE SHAPES OR

CONFIGURATIONS YOU ARE DOODLING FOR.

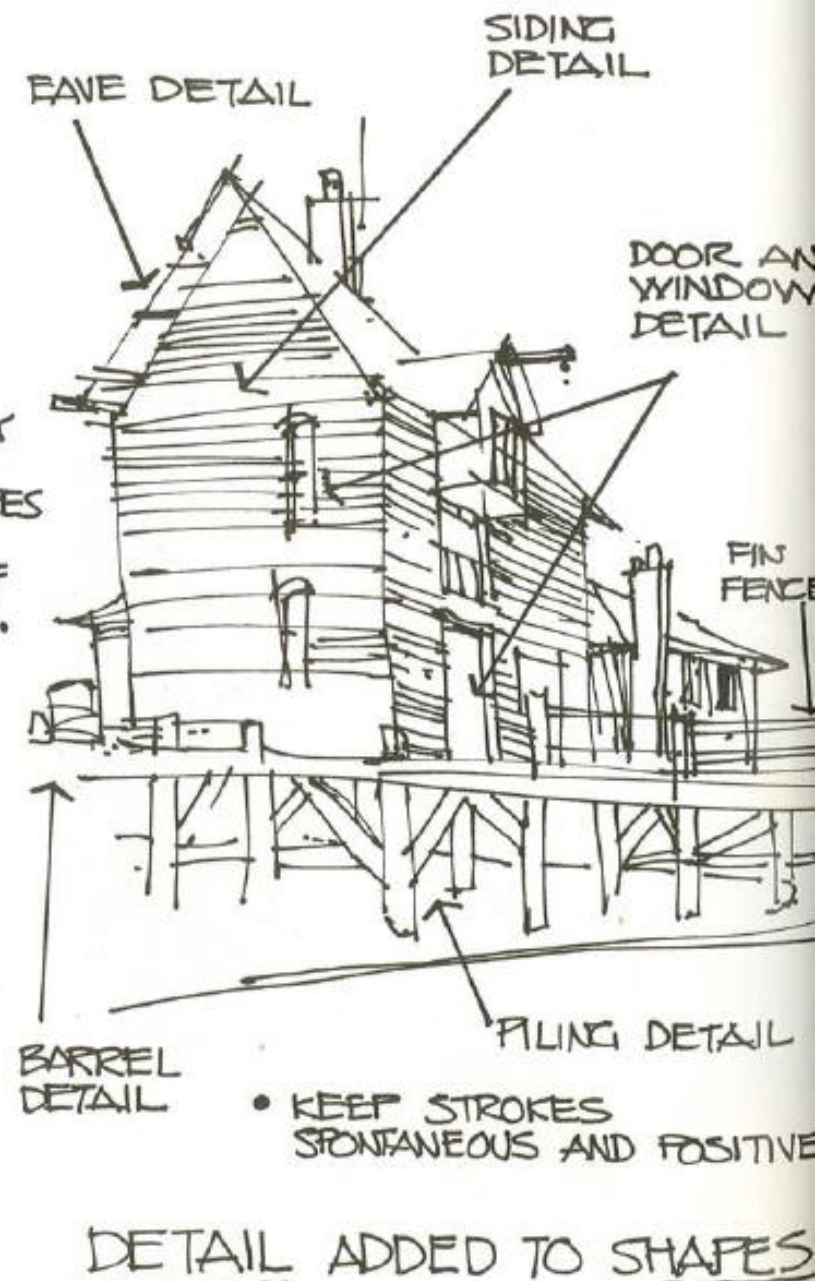
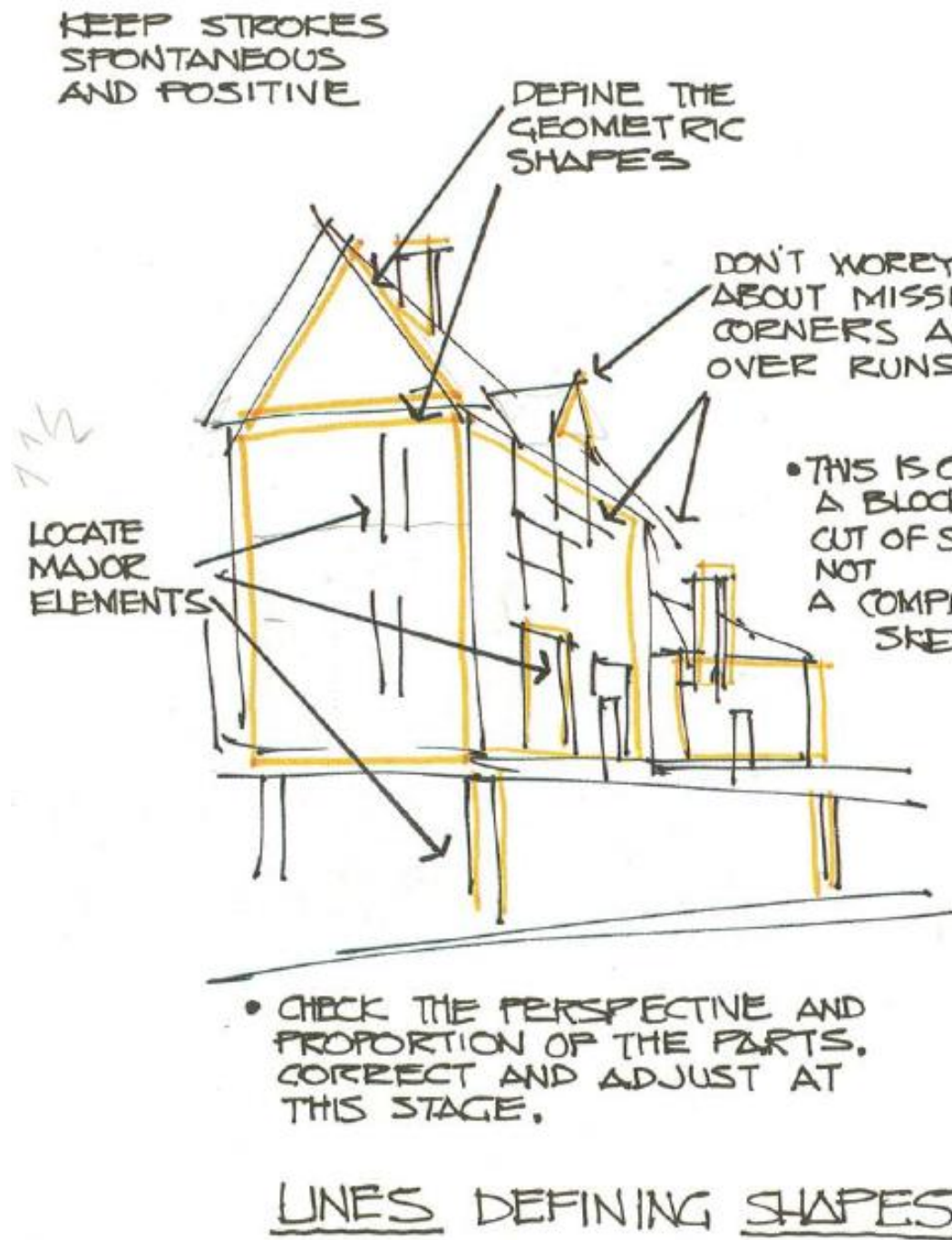


THE PROCESS IS AS FOLLOWS:

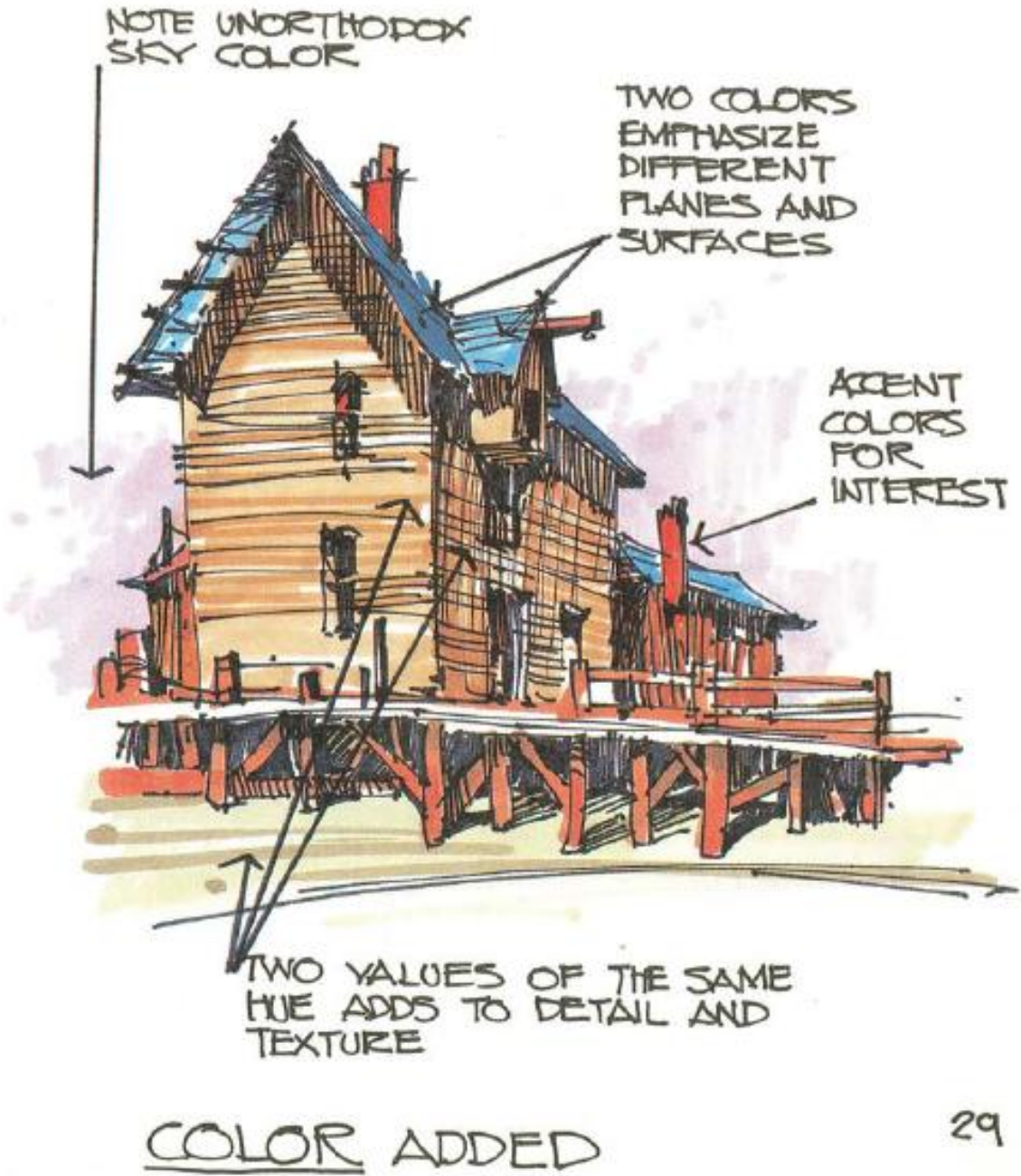
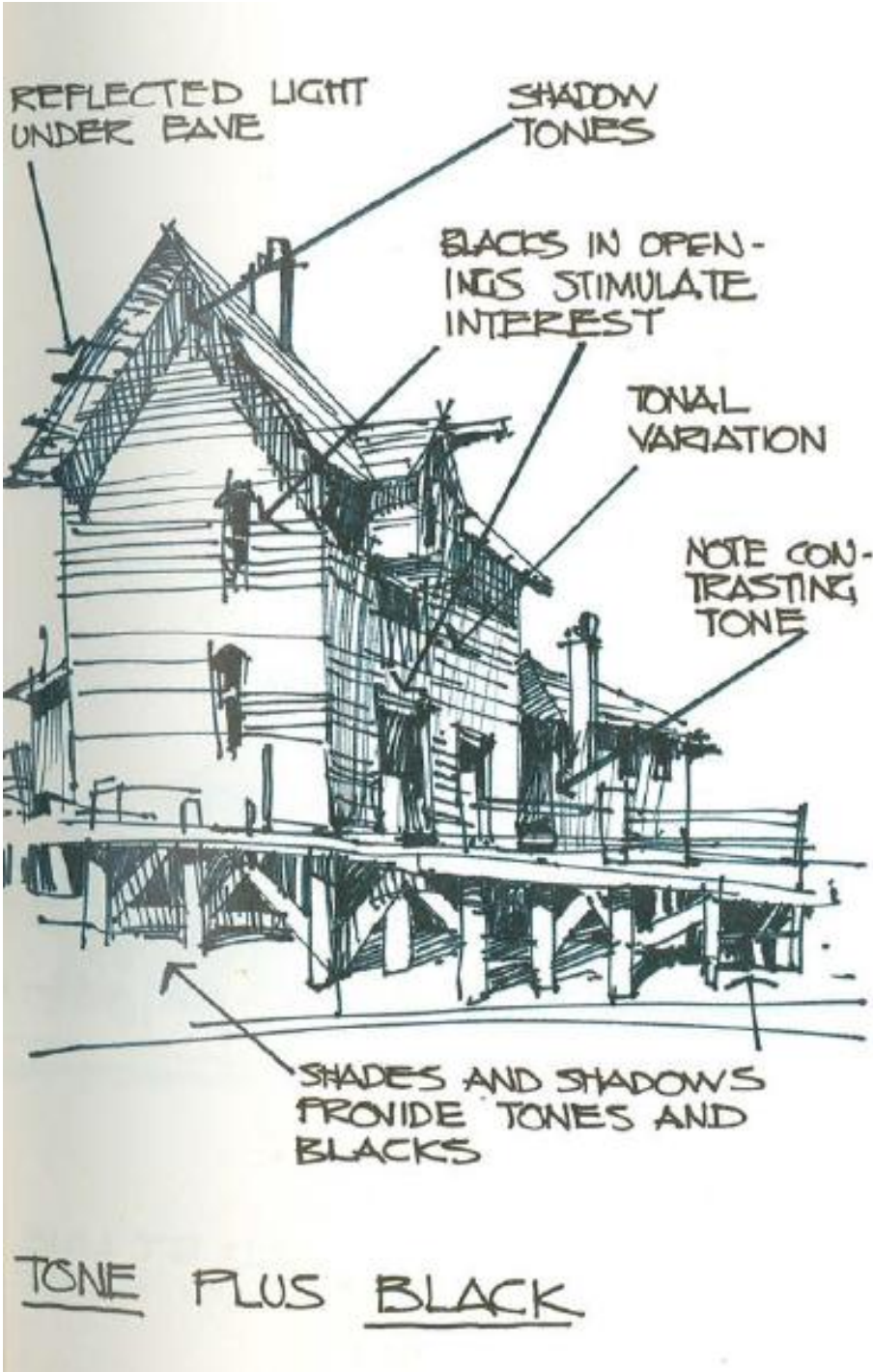
THE KEY IS TO KEEP DOODLING UNTIL YOU ARE ON THE RIGHT TRACK.



THE PROCESS IS AS FOLLOWS:

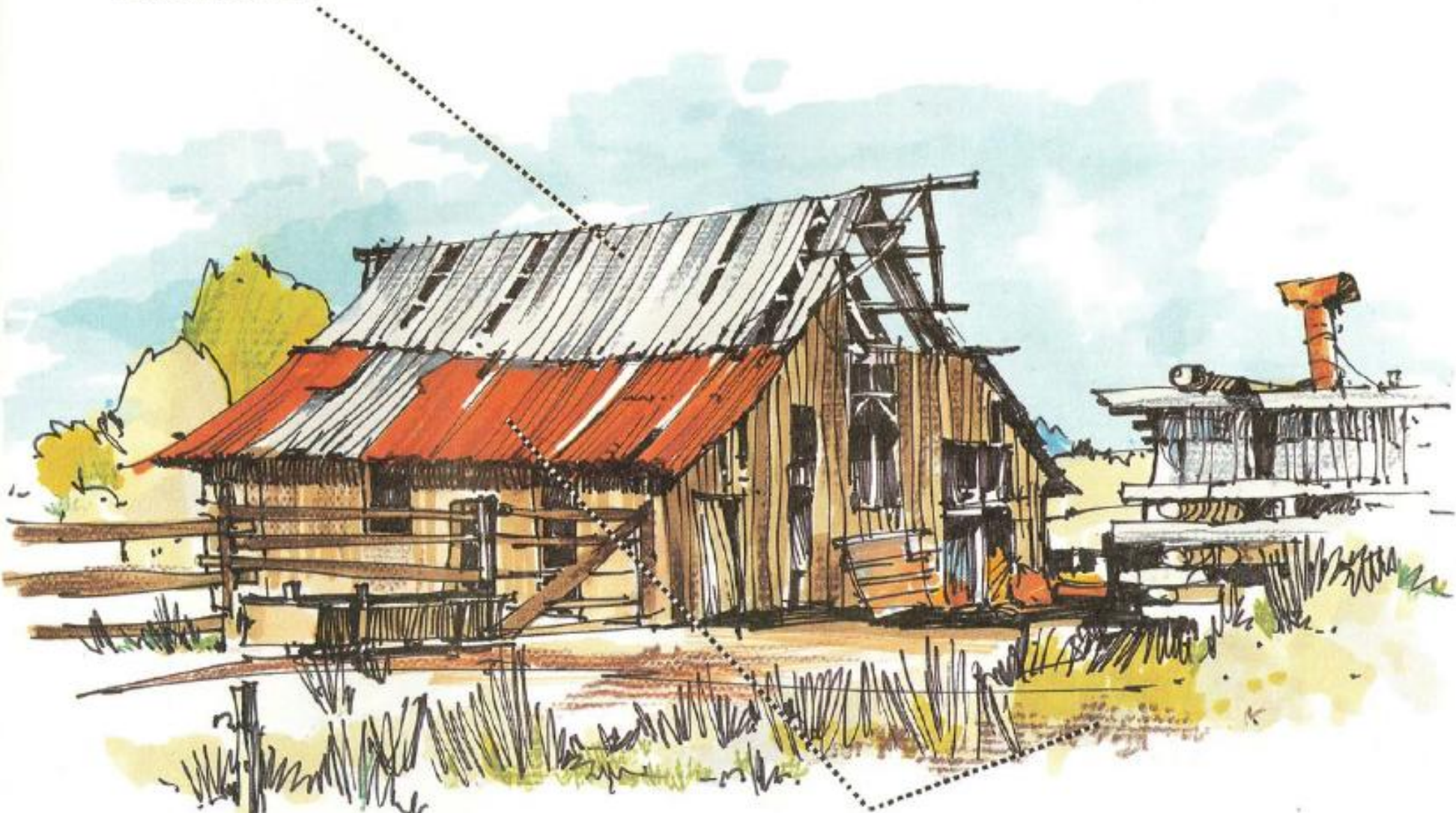


THE PROCESS IS AS FOLLOWS:



LEARNING TO SKETCH

PENCIL APPLIED WITH TEXTURED SURFACE UNDER SKETCH PAPER RENDERS TEXTURE ON PAPER SURFACE.

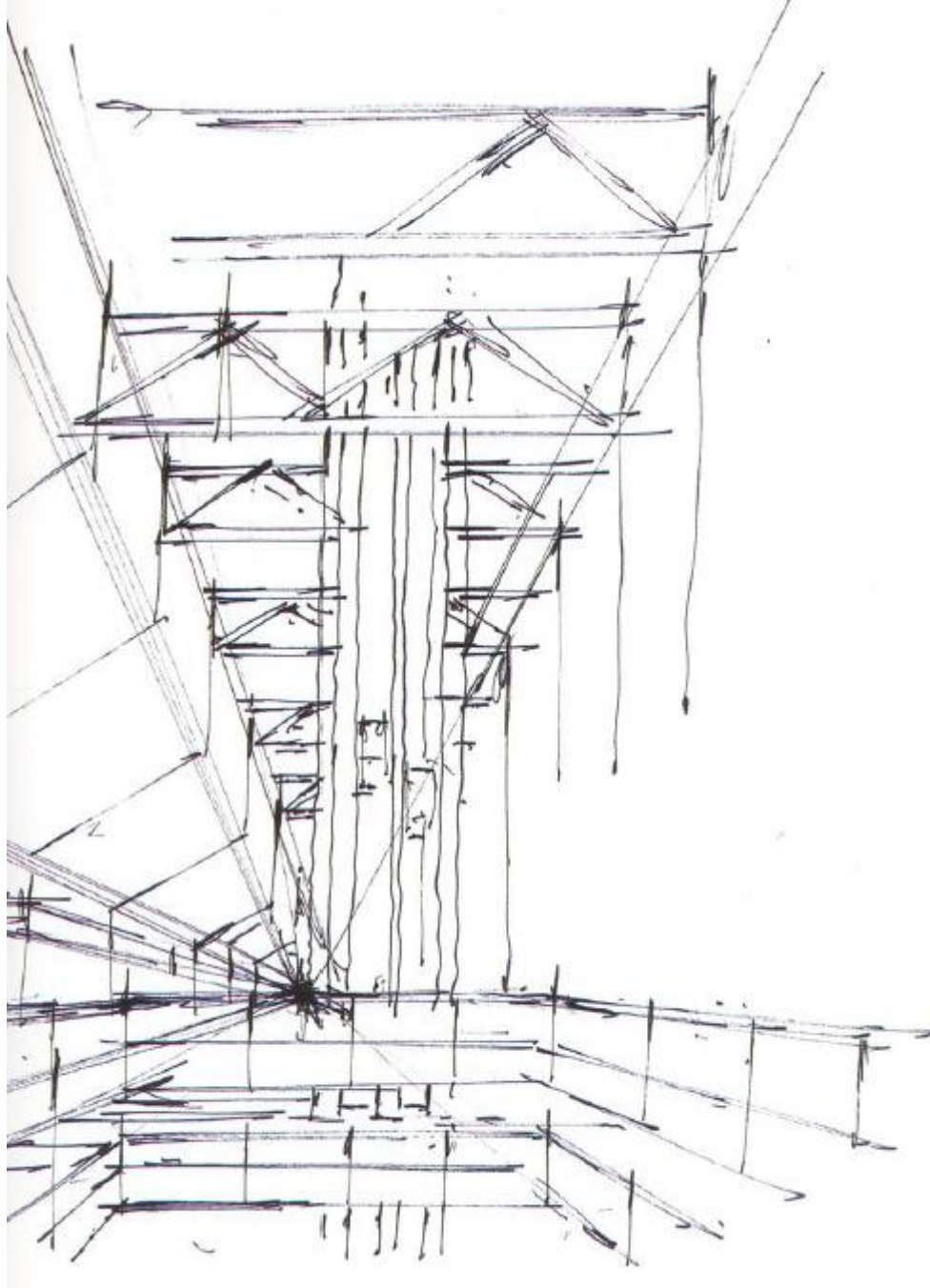


COLORED MARKER WITH COLORED PENCIL OVERLAYED

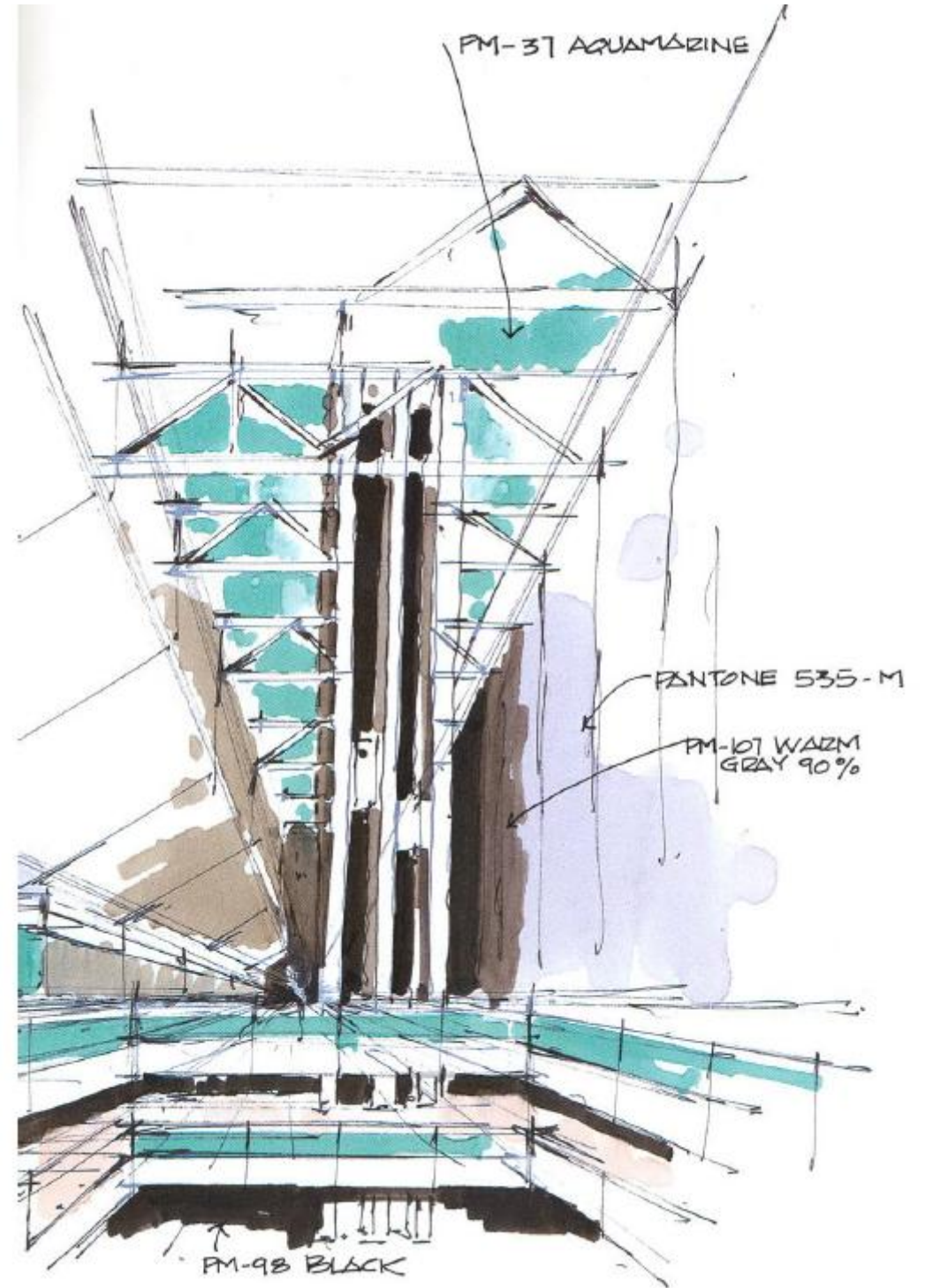
SMALL BARREL MARKER - FINE TIP POINT - MARKER PAPER

ONCE YOU HAVE DECIDED WHICH VIEW BETTER SERVES YOUR PURPOSES, YOU CAN START SKETCHING ROUGHLY WITH A BREEZE BLACK PEN.

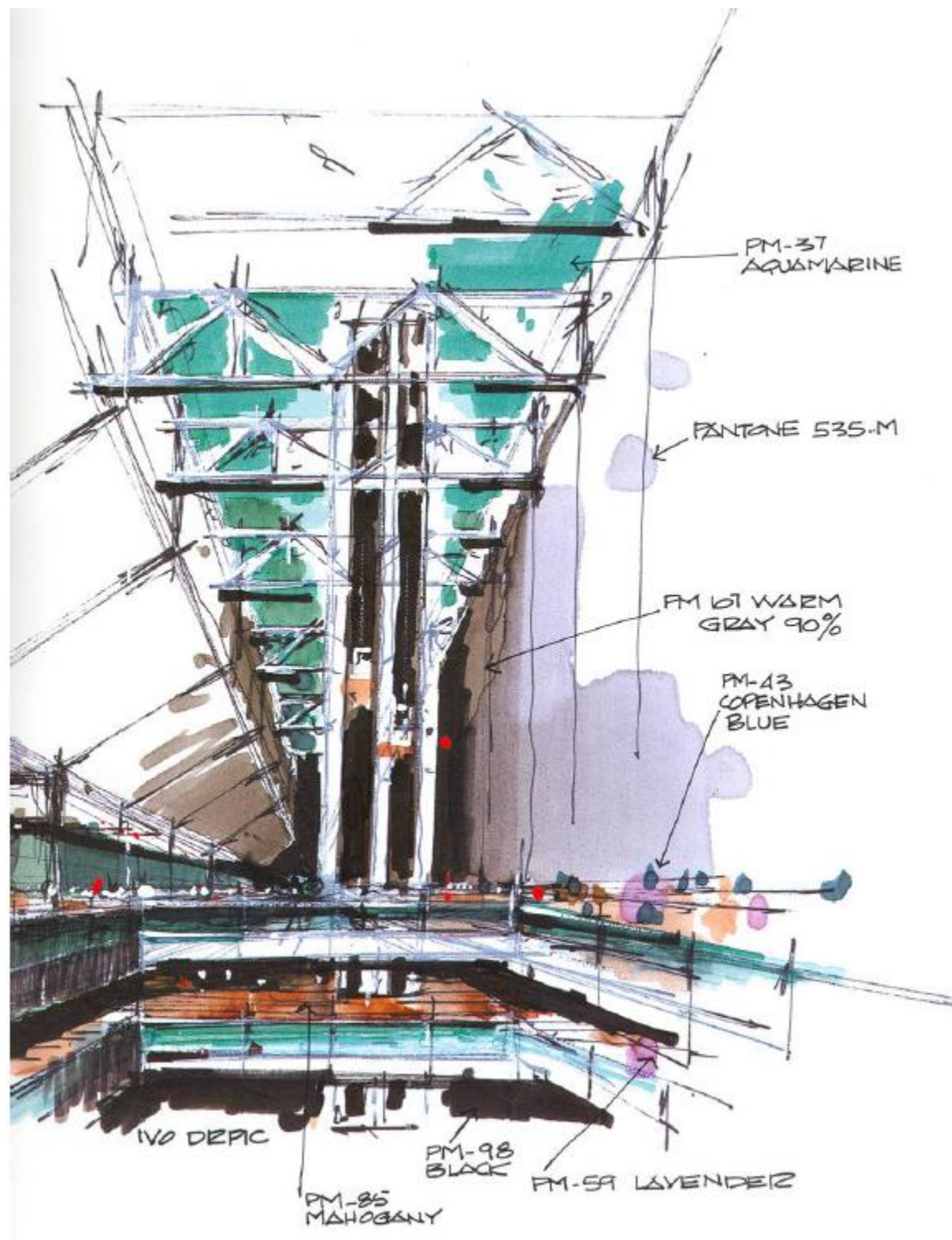
KEEP THE SKETCH VERY LOOSE.



START APPLYING COLOR



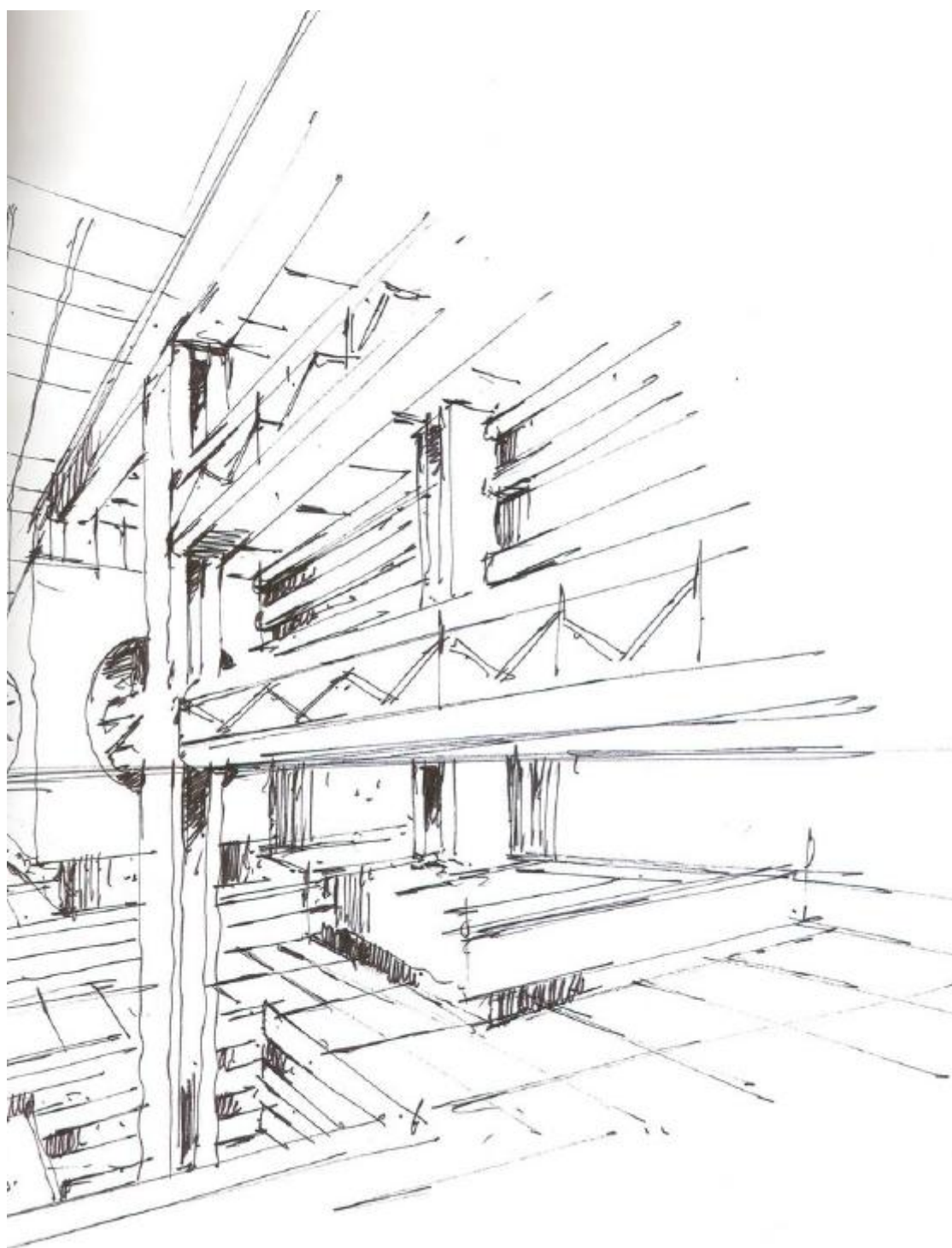
KEEP APPLYING COLORS UNTIL YOU ACHIEVE THE DESIRED RESULTS.
BUT DO NOT OVERWORK IT.



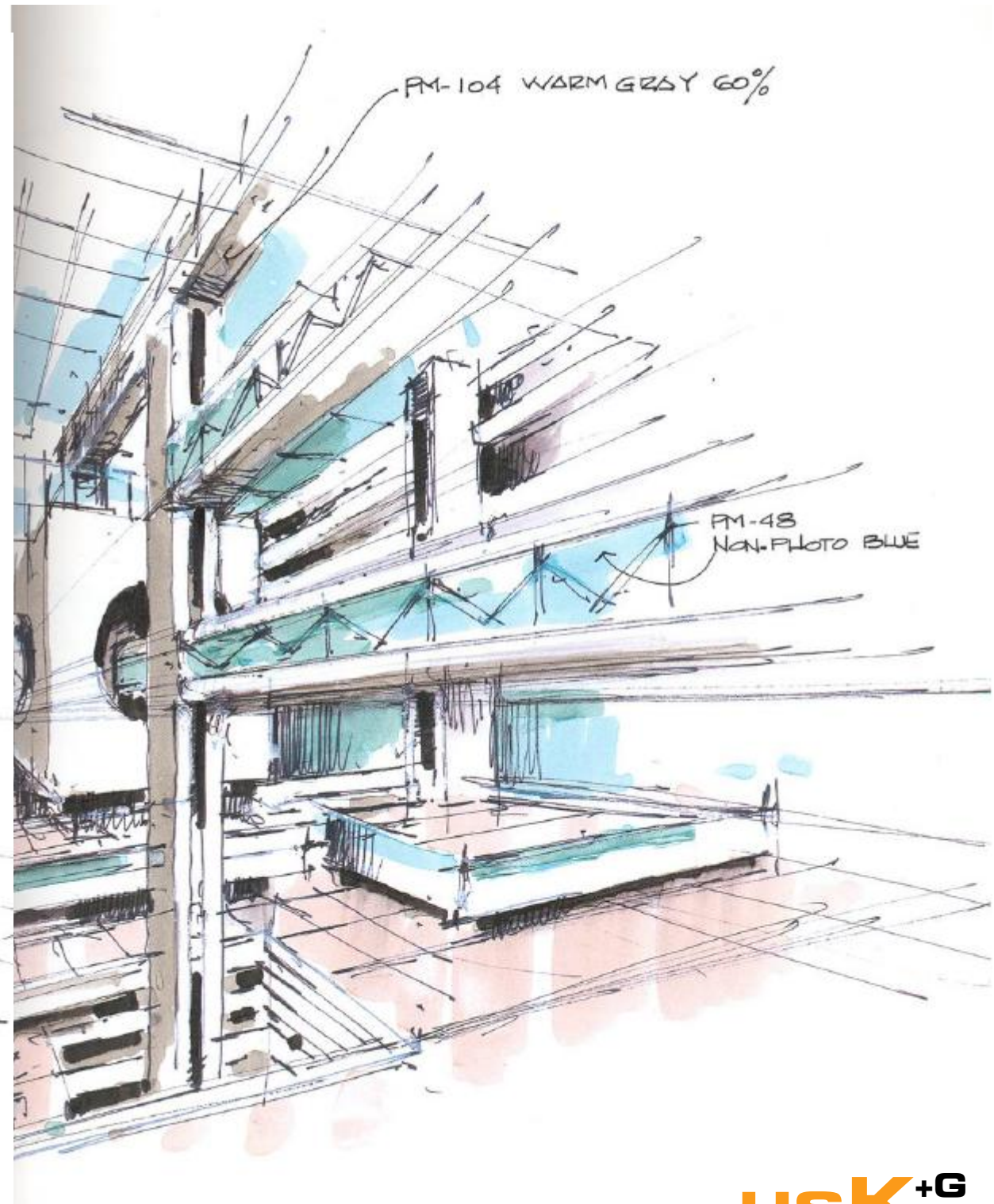
SKETCH PAPER, COLORED MARKERS, AND NYLON TIP PEN.
TIME: 10 MINUTES

ONCE YOU HAVE DECIDED WHICH VIEW BETTER SERVES YOUR PURPOSES, YOU CAN START SKETCHING ROUGHLY WITH A BREEZE BLACK PEN.

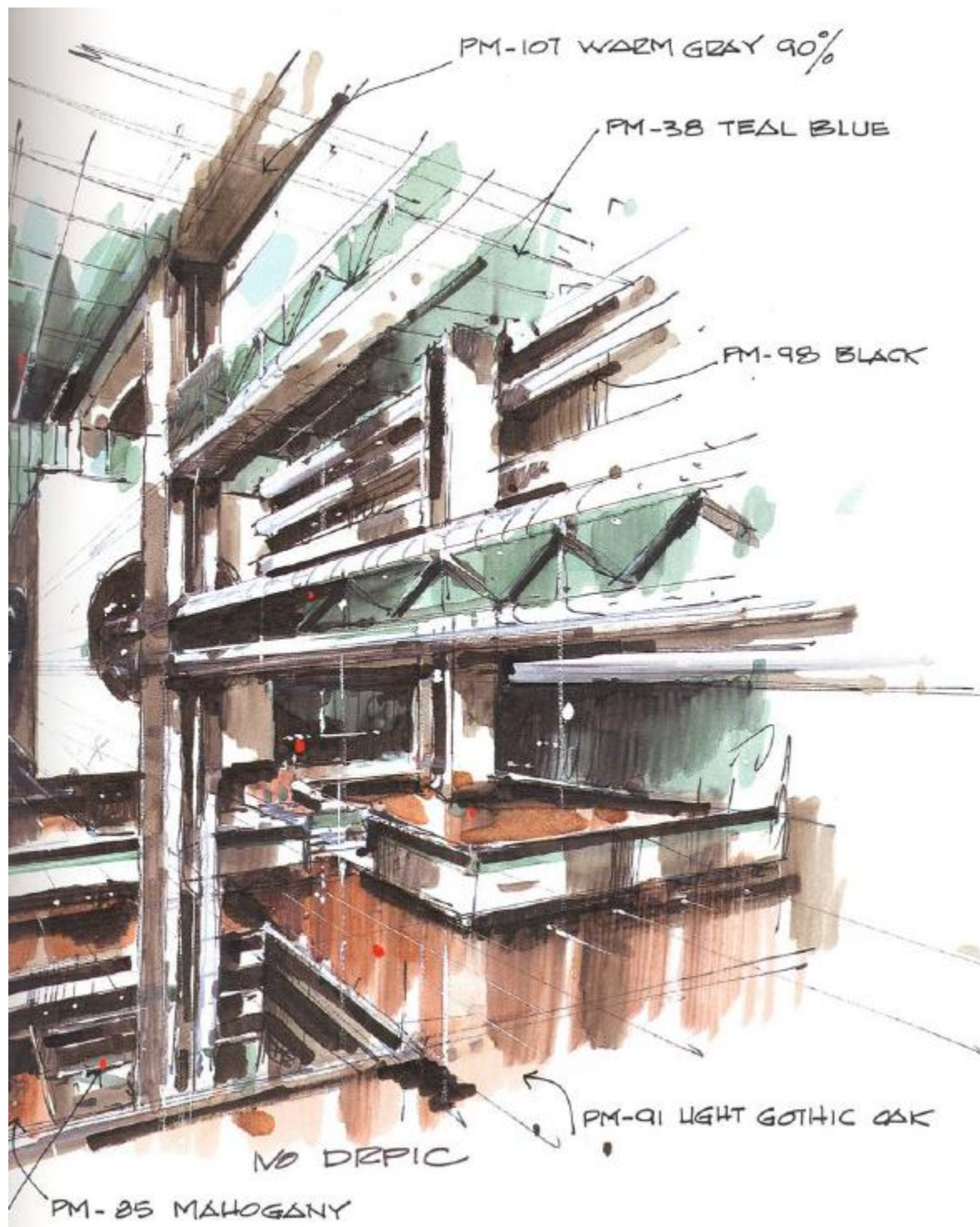
KEEP THE SKETCH VERY LOOSE.



START APPLYING COLOR



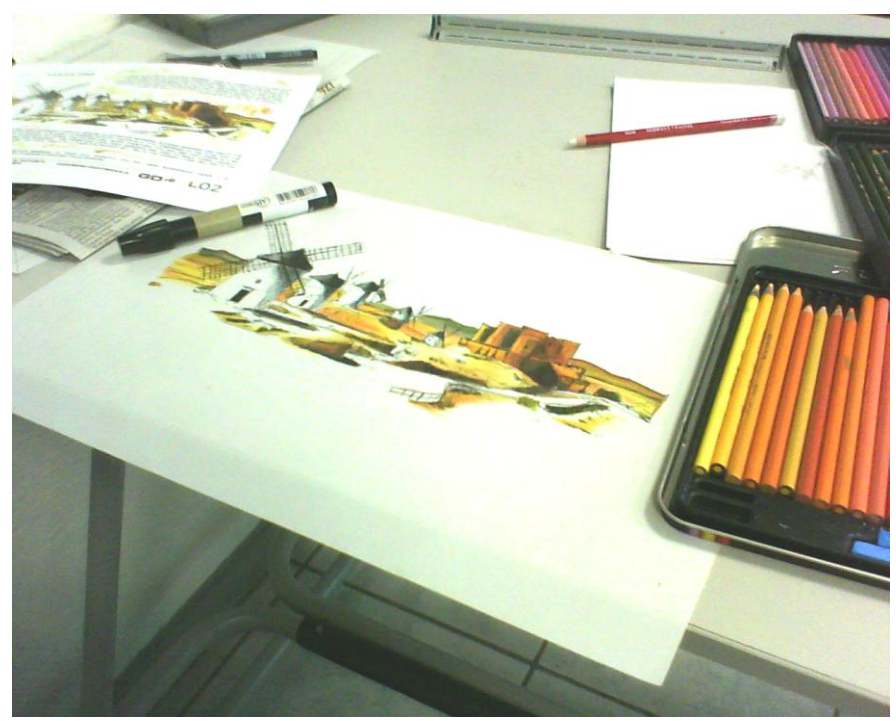
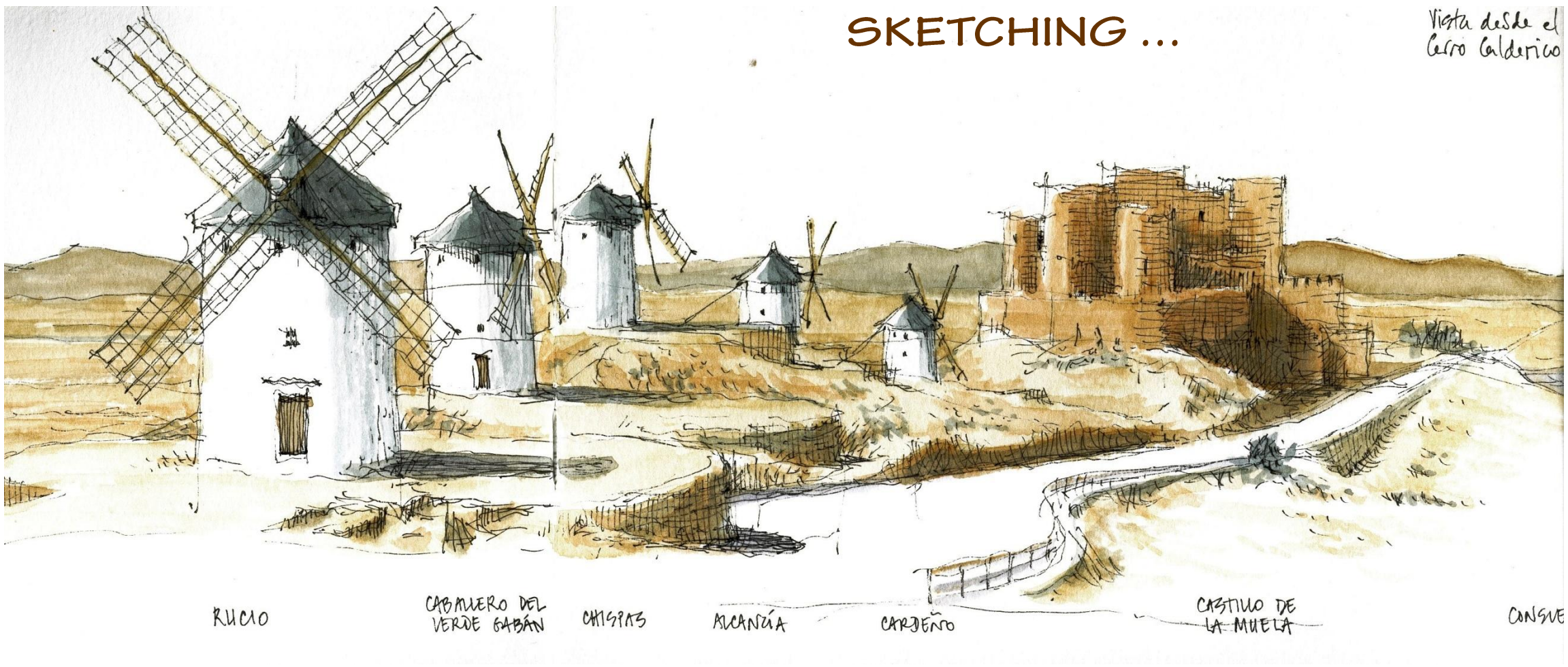
KEEP APPLYING COLORS UNTIL YOU ACHIEVE THE DESIRED RESULTS.
BUT DO NOT OVERWORK IT.

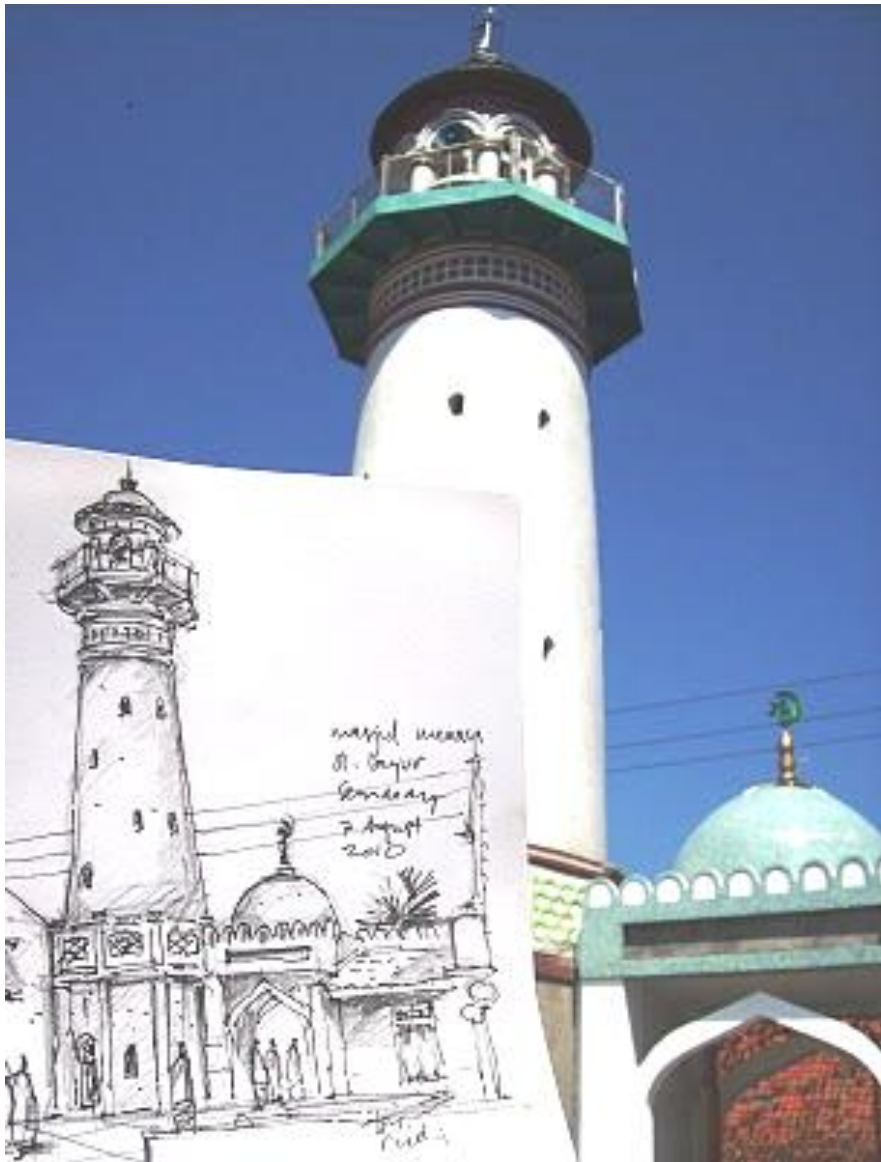


SKETCH PAPER, COLORED MARKERS, AND NYLON TIP PEN.
TIME: 60 MINUTES

SKETCHING ...

Vista desde el Cerro Calderico





SKETCHING ...



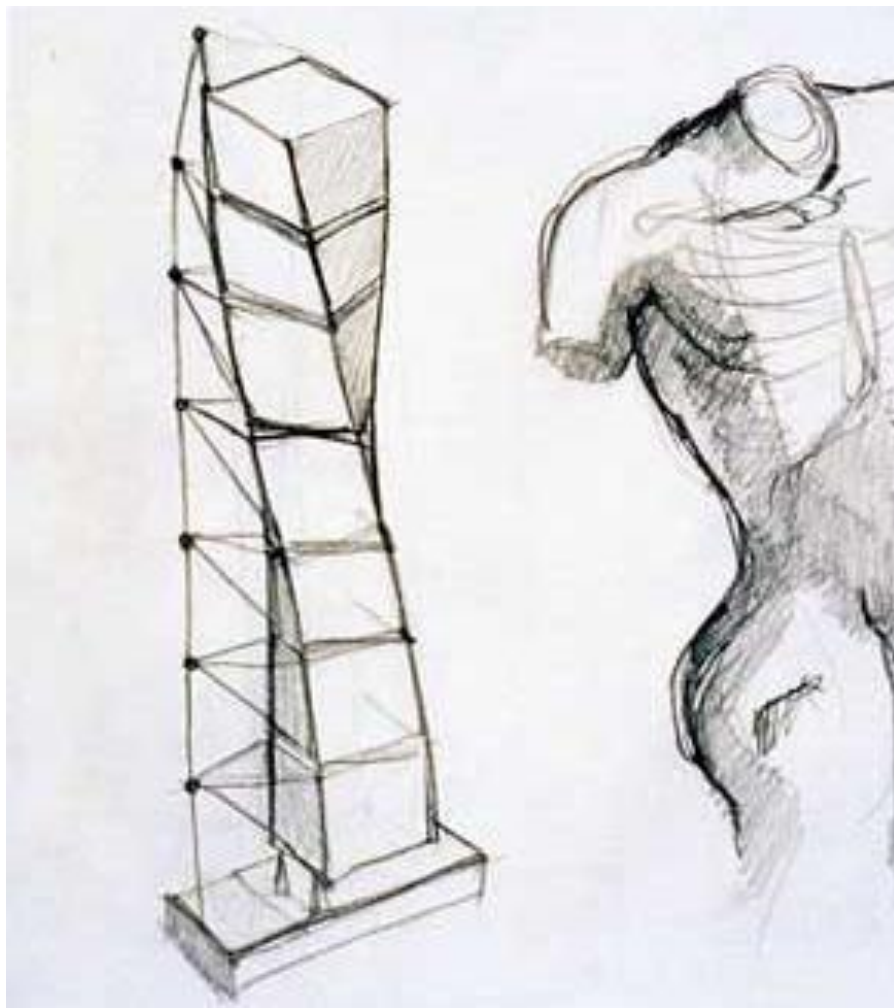
SKETCHING ...



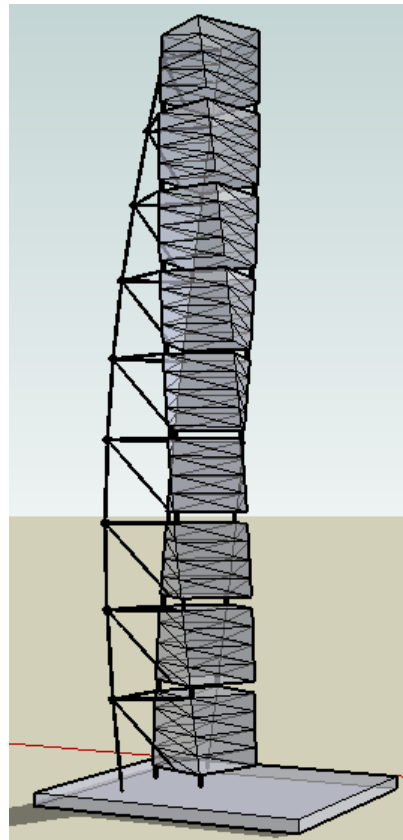
SKETCHING ...



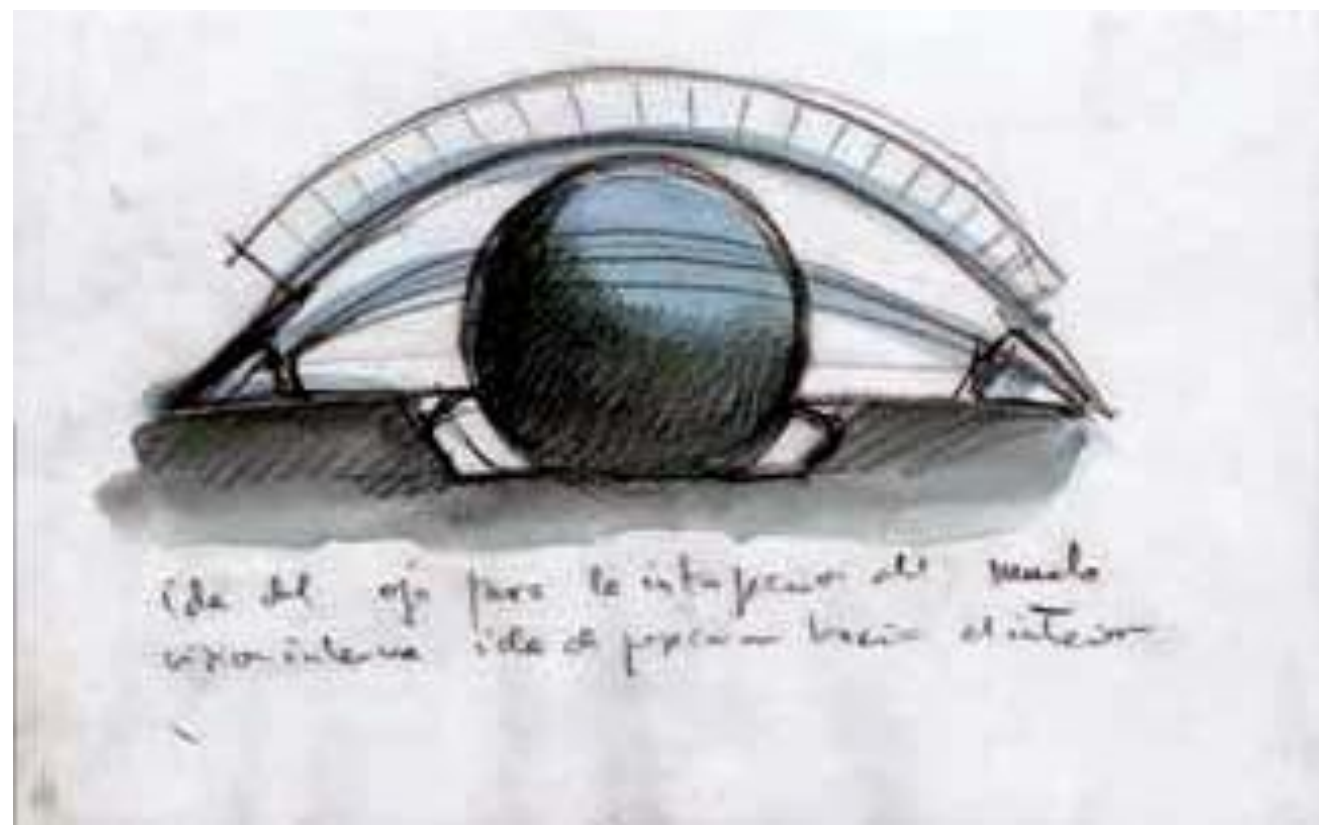
Urban Sketching Workshop



Free hand sketches Arch. Santiago Calatrava

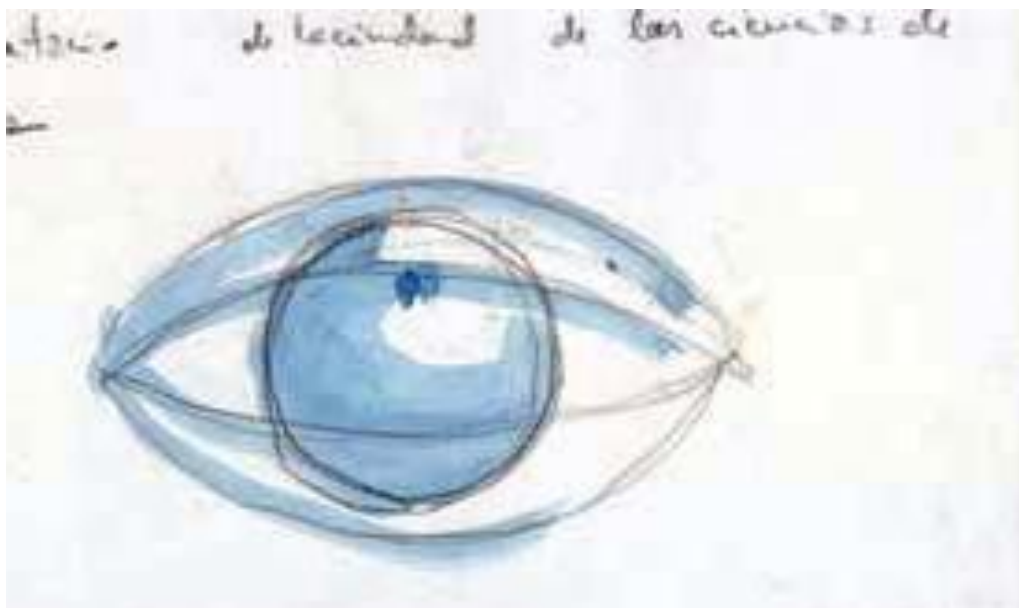


Santiago Calatrava
High Rise Apartment Tower
Malmö, Sweden



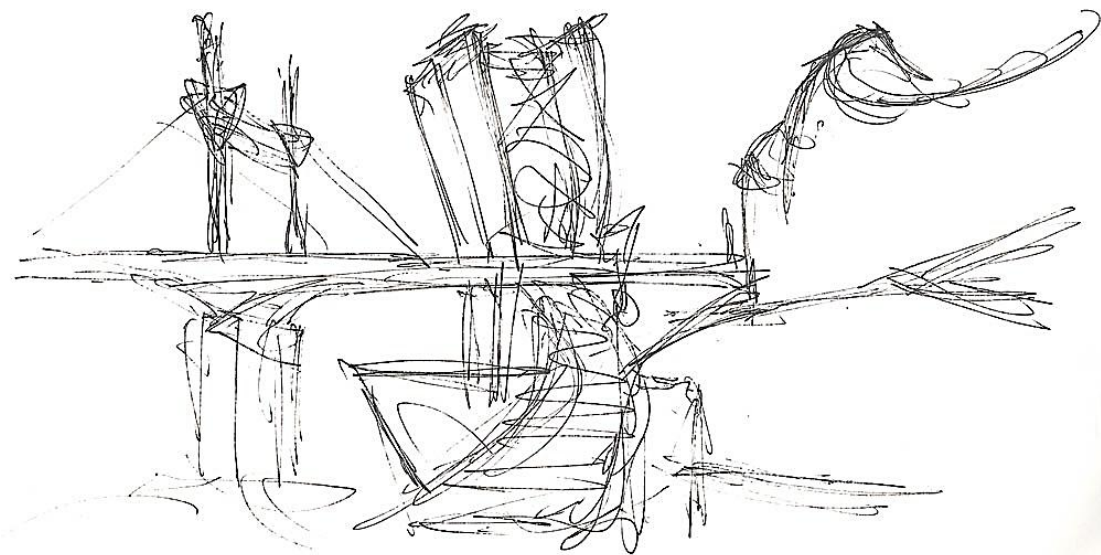
Free hand sketches Arch. Santiago Calatrava

Santiago Calatrava
Ciudad de las Artes y las Ciencias
Valencia, España

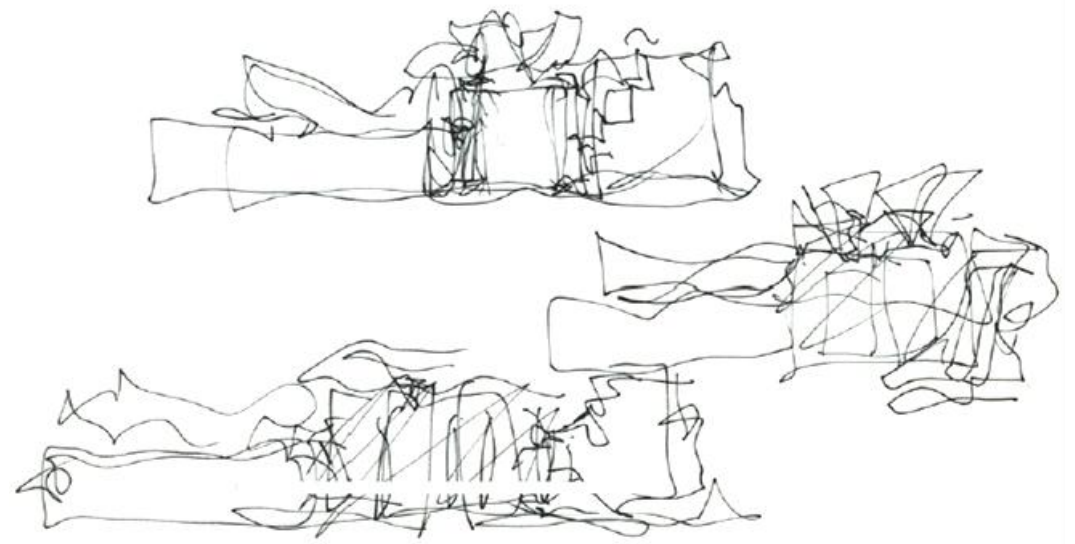




Franky Gehry's form red blood



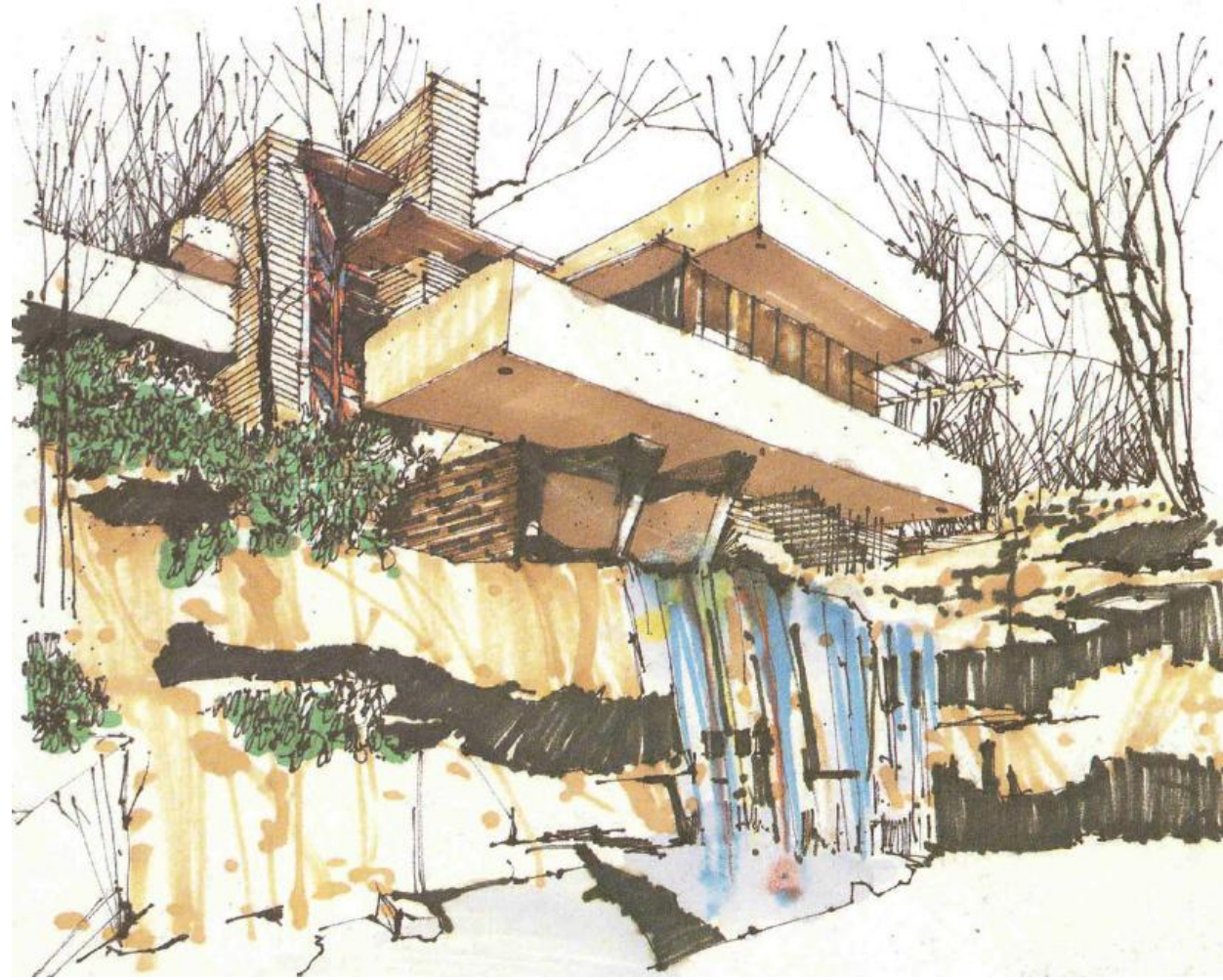
Free hand sketches Arch. Frank Gehry



Franky

Oct./91 Bilbao

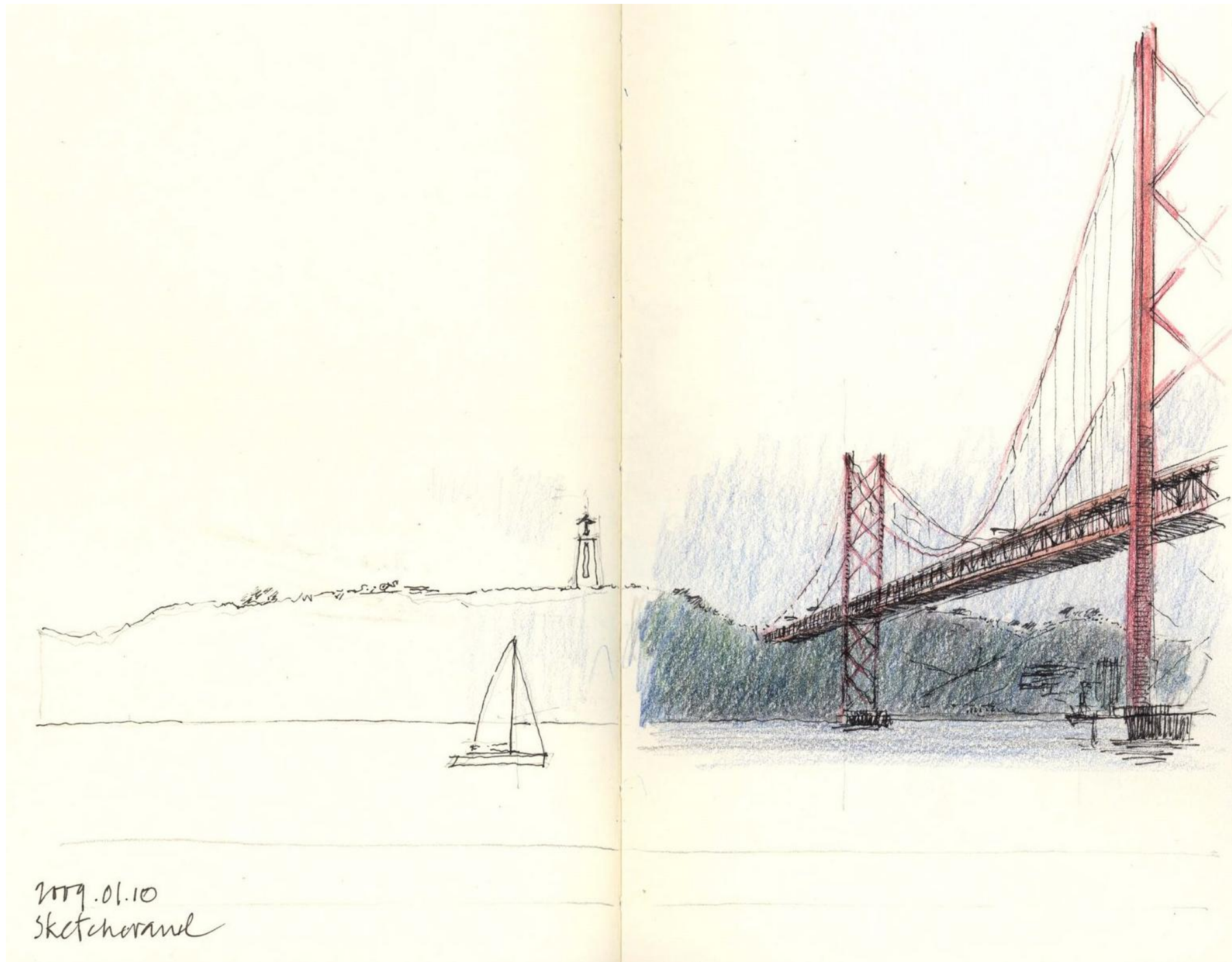




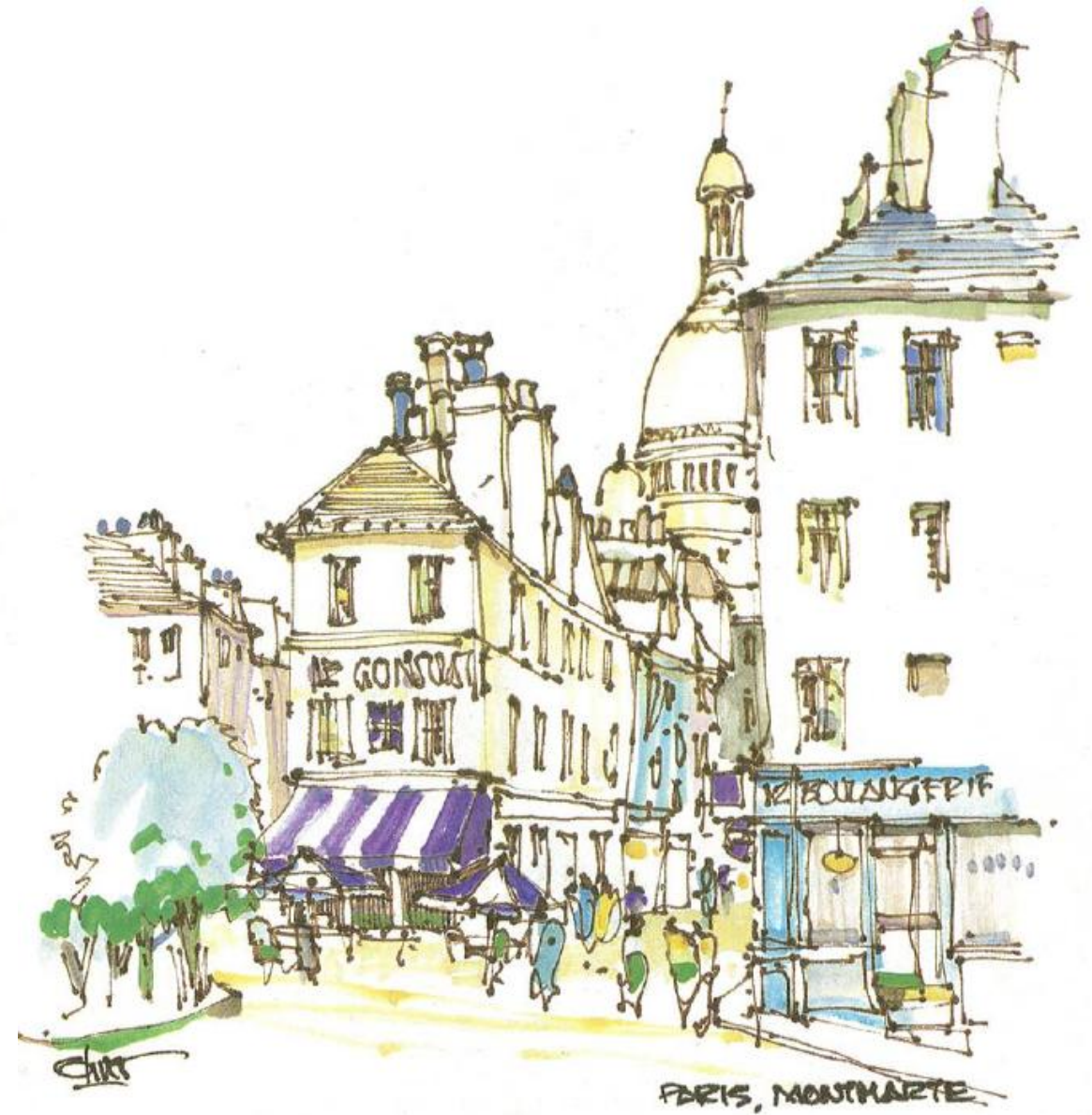
Urban Sketching Workshop



Urban Sketching Workshop



Urban Sketching Workshop



Urban Sketching Workshop



SANTA MARIA DELLA SALUTE
VENICE, ITALY '81

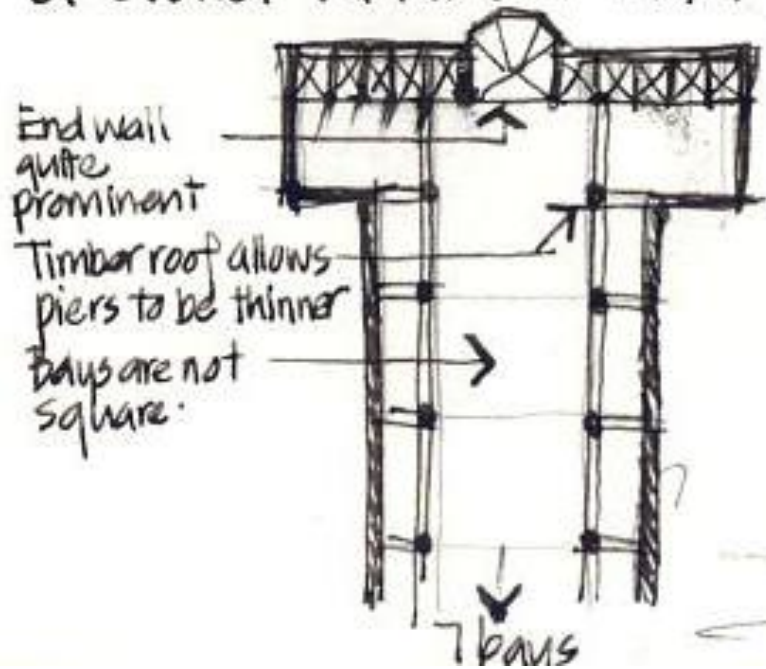
MONDAY 25 JUNE

SANTA CROCE

one of the largest churches in Italy.

"The plan takes the design principles of Santa Maria Novella even further, arguably to their ultimate conclusion.

THE OVERWHELMING IMPRESSION IS OF IMMENSE FLOWING SPACE + OF EVENLY DISTRIBUTED LIGHT.









of r
pla
ka



Stood in the queue to climb the tower in Siena. In 10mins it didnt move... so we made an! (but I still utilised it as a sketching op)

Lunch in the Cactus Garden.





S. Andrea Mantua by Alberti



Urban Sketching Workshop



Urban Sketching Workshop



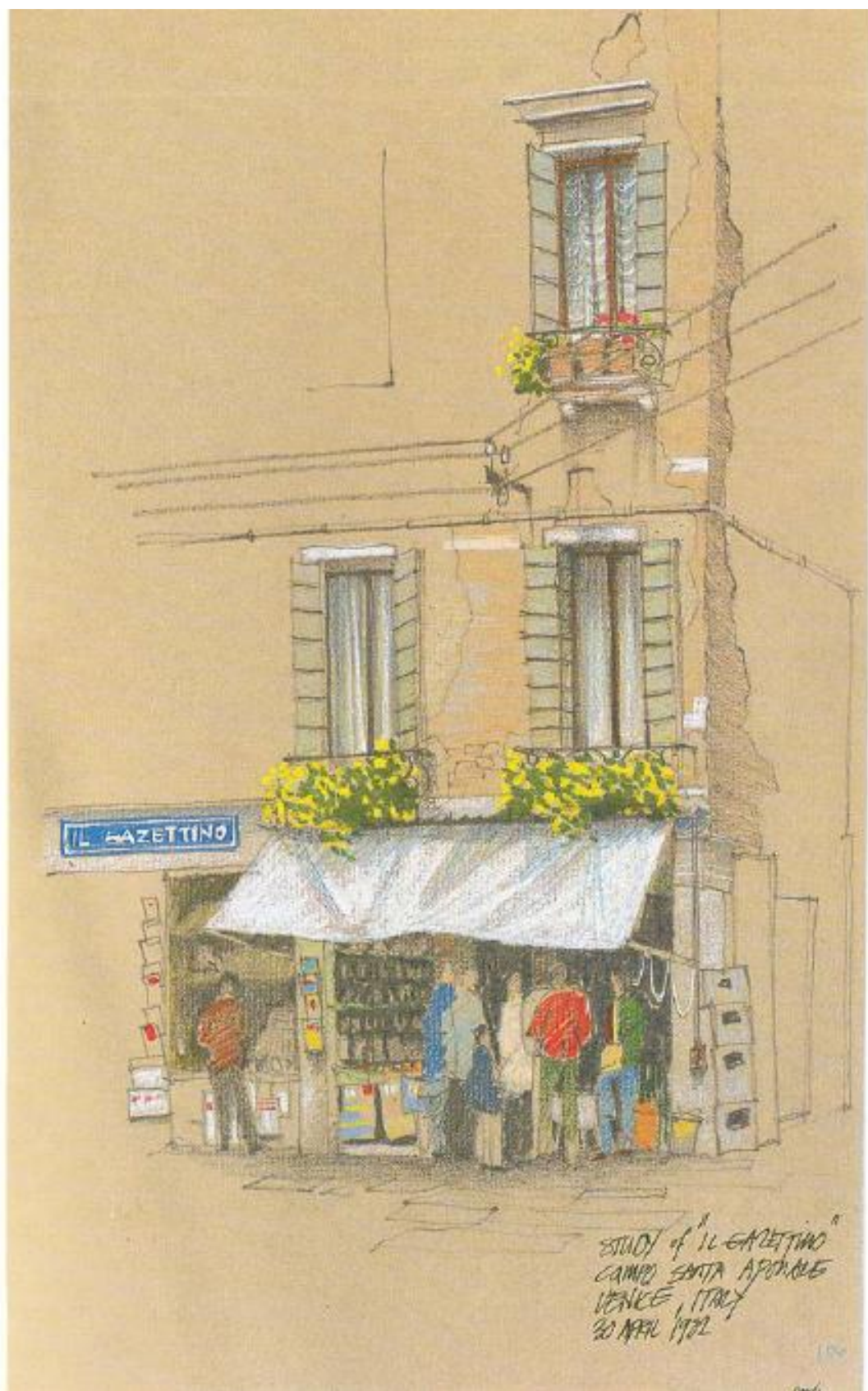
VIEW FROM FORMAL RECEPTION TO STREET

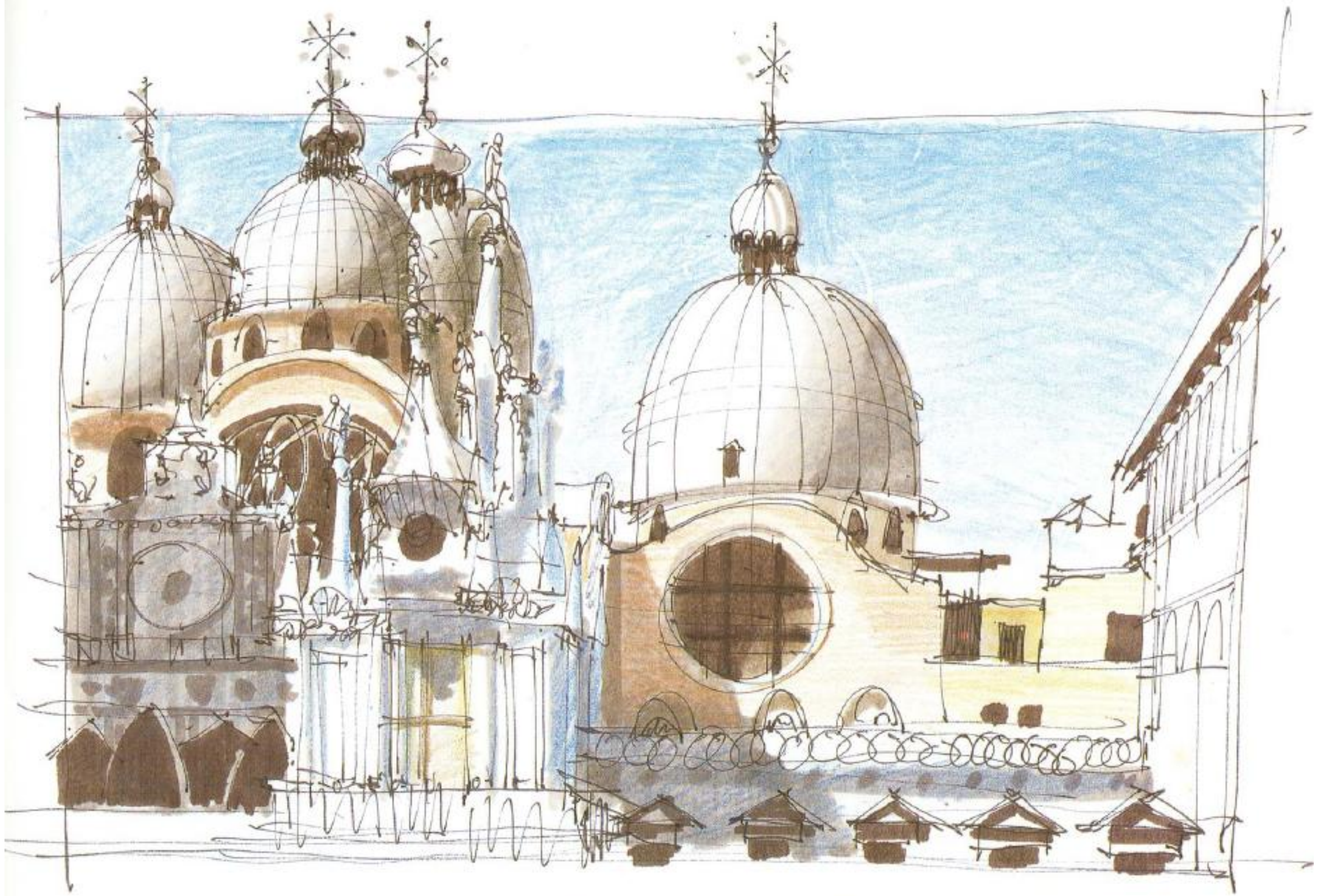


VIEW TOWARDS CANAL FROM 'CROWN'S NEST' DEP INTERNATIONAL STUDIOS.



Urban Sketching Workshop





Michael E. Doyle, illustrator, Boulder, CO. Marker and colored pencil on 8" x-10" bond paper, 1½ hours.

